

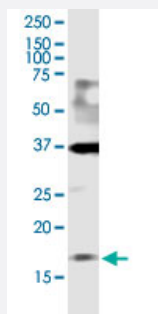
CX Grade

# CFL1 monoclonal antibody (M04J), clone 1A1

Catalog # H00001072-M04J

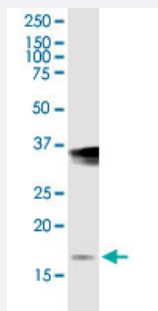
Size 100 ug

## Applications



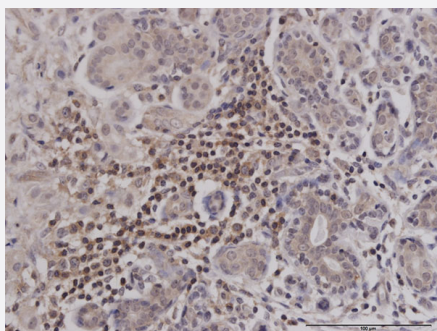
### Western Blot (Cell lysate)

CFL1 monoclonal antibody (M04J), clone 1A1. Western Blot analysis of CFL1 expression in NIH/3T3.



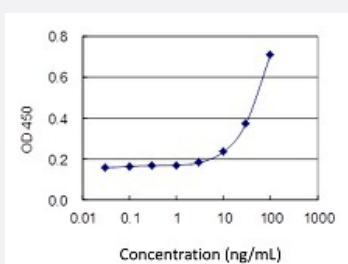
### Western Blot (Cell lysate)

CFL1 monoclonal antibody (M04J), clone 1A1. Western Blot analysis of CFL1 expression in HeLa.



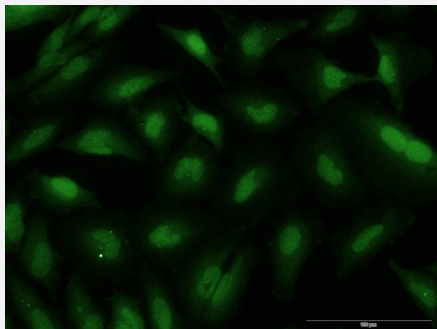
### Immunohistochemistry (Formalin/PFA-fixed paraffin-embedded sections)

Immunoperoxidase of monoclonal antibody to CFL1 on formalin-fixed paraffin-embedded human breast cancer. [antibody concentration 3 ug/ml]



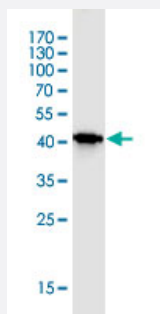
### Sandwich ELISA (Recombinant protein)

Detection limit for recombinant GST tagged CFL1 is 3 ng/ml as a capture antibody.



## Immunofluorescence

Immunofluorescence of monoclonal antibody to CFL1 on HeLa cell . [antibody concentration 10 ug/ml]



Western Blot detection against Immunogen (44 KDa) .

## Specification

|                                      |   |
|--------------------------------------|---|
| <b>Product Description</b>           | Mouse monoclonal antibody raised against a full-length recombinant CFL1.<br>This product is belong to Cell Culture Grade Antibody (CX Grade).                                 |
| <b>Immunogen</b>                     | CFL1 (AAH11005.1, 1 a.a. ~ 166 a.a) full-length recombinant protein with GST tag. MW of the GST tag alone is 26 KDa.  |
| <b>Sequence</b>                      | MASGVAVSDGVIKVFNDMKVRKSSTPEEVKKRKKAVLFCLSDDKKNILEEGKEILVGDVGQTVD<br>DPYATFAKMLPDKDCRYALYDATYETKESKKEDLVFIFWAPESAPLKSMMIYASSKDAIKKKLTGIK<br>HELQANCYEGVKDRCTLAEKLGGSAVISLEGKPL |
| <b>Host</b>                          | Mouse   |
| <b>Reactivity</b>                    | Human, Mouse  |
| <b>Interspecies Antigen Sequence</b> | Mouse (98); Rat (98)  |
| <b>Preparation Method</b>            | Cell Culture Production   |
| <b>Isotype</b>                       | IgG2a Kappa   |
| <b>Quality Control Testing</b>       | Antibody Reactive Against Recombinant Protein.<br>Western Blot detection against Immunogen (44 KDa) .   |
| <b>Storage Buffer</b>                | In 1x PBS, pH 7.4   |

**Storage Instruction**

Store at -20°C or lower. Aliquot to avoid repeated freezing and thawing.

## Applications

- Western Blot (Cell lysate)

CFL1 monoclonal antibody (M04J), clone 1A1. Western Blot analysis of CFL1 expression in NIH/3T3.

[Protocol Download](#)

- Western Blot (Cell lysate)

CFL1 monoclonal antibody (M04J), clone 1A1. Western Blot analysis of CFL1 expression in HeLa.

[Protocol Download](#)

- Western Blot (Recombinant protein)

[Protocol Download](#)

- Immunohistochemistry (Formalin/PFA-fixed paraffin-embedded sections)

Immunoperoxidase of monoclonal antibody to CFL1 on formalin-fixed paraffin-embedded human breast cancer. [antibody concentration 3 ug/ml]

[Protocol Download](#)

- Sandwich ELISA (Recombinant protein)

Detection limit for recombinant GST tagged CFL1 is 3 ng/ml as a capture antibody.

[Protocol Download](#)

- ELISA

- Immunofluorescence

Immunofluorescence of monoclonal antibody to CFL1 on HeLa cell . [antibody concentration 10 ug/ml]

## Gene Info — CFL1

**Entrez GeneID**[1072](#)**GeneBank Accession#**[BC011005.1](#)**Protein Accession#**[AAH11005.1](#)

|                    |  |
|--------------------|--|
| Gene Name          | CFL1   |
| Gene Alias         | CFL  |
| Gene Description   | cofilin 1 (non-muscle)   |
| Omim ID            | <a href="#">601442</a>   |
| Gene Ontology      | <a href="#">Hyperlink</a>  |
| Gene Summary       | Cofilin is a widely distributed intracellular actin-modulating protein that binds and depolymerizes filamentous F-actin and inhibits the polymerization of monomeric G-actin in a pH-dependent manner. It is involved in the translocation of actin-cofilin complex from cytoplasm to nucleus.[supplied by OMIM] |
| Other Designations | -  |

## Pathway

- [Axon guidance](#)
- [Fc gamma R-mediated phagocytosis](#)
- [Regulation of actin cytoskeleton](#)

## Disease

- [Spinal Dysraphism](#)