

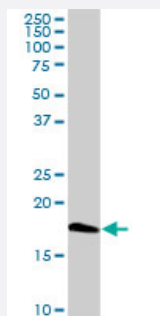
MaxPab®

# CETN1 purified MaxPab rabbit polyclonal antibody (D01P)

Catalog # H00001068-D01P

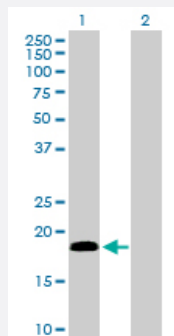
Size 100 ug

## Applications



### Western Blot (Tissue lysate)

CETN1 MaxPab rabbit polyclonal antibody. Western Blot analysis of CETN1 expression in mouse kidney.



### Western Blot (Transfected lysate)

Western Blot analysis of CETN1 expression in transfected 293T cell line ([H00001068-T01](#)) by CETN1 MaxPab polyclonal antibody.

Lane 1: CETN1 transfected lysate(19.60 KDa).

Lane 2: Non-transfected lysate.

## Specification

Product Description	Rabbit polyclonal antibody raised against a full-length human CETN1 protein.
Immunogen	CETN1 (NP_004057.1, 1 a.a. ~ 172 a.a) full-length human protein.
Sequence	MASGFKKPSAASTGQKRKVAPKPELTEDQKQEVREAFDLFDVDGSGTIDAKELKVAMRALGFE PRKEEMKKMISEVDREGTGKISFNDFLAVMTQKMSEKDTKEEILKAFRLFDDDETGKISFKNLKRV ANELGENLTDEELQEMIDEADRDGDGEVNEEEEFLRMKKTSLY
Host	Rabbit
Reactivity	Human, Mouse

Quality Control Testing	Antibody reactive against mammalian transfected lysate.
Storage Buffer	In 1x PBS, pH 7.4
Storage Instruction	Store at -20°C or lower. Aliquot to avoid repeated freezing and thawing.

## Applications

- Western Blot (Tissue lysate)

CETN1 MaxPab rabbit polyclonal antibody. Western Blot analysis of CETN1 expression in mouse kidney.

[Protocol Download](#)

- Western Blot (Transfected lysate)

Western Blot analysis of CETN1 expression in transfected 293T cell line ([H00001068-T01](#)) by CETN1 MaxPab polyclonal antibody.

Lane 1: CETN1 transfected lysate(19.60 KDa).

Lane 2: Non-transfected lysate.

[Protocol Download](#)

## Gene Info — CETN1

Entrez GeneID	<a href="#">1068</a>
GeneBank Accession#	<a href="#">NM_004066</a>
Protein Accession#	<a href="#">NP_004057.1</a>
Gene Name	CETN1
Gene Alias	CEN1, CETN
Gene Description	centrin, EF-hand protein, 1
Omim ID	<a href="#">603187</a>
Gene Ontology	<a href="#">Hyperlink</a>
Gene Summary	The protein encoded by this gene plays important roles in the determination of centrosome position and segregation, and in the process of microtubule severing. This encoded protein is localized to the centrosome of interphase cells, and redistributes to the region of the spindle poles during mitosis, reflecting the dynamic behavior of the centrosome during the cell cycle. [provided by RefSeq]

**Other Designations**Centrin-1|EF-hand protein|calcium binding protein|centrin 1

---