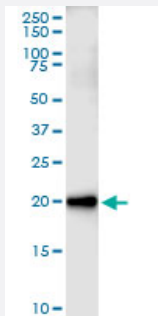


# CEBPG (Human) IP-WB Antibody Pair

Catalog # H00001054-PW1

Size 1 Set

## Applications



Immunoprecipitation of CEBPG transfected lysate using rabbit polyclonal anti-CEBPG and Protein A Magnetic Bead ([U0007](#)), and immunoblotted with mouse polyclonal anti-CEBPG.

## Specification

|                                      |   |
|--------------------------------------|---|
| <b>Product Description</b>           | This IP-WB antibody pair set comes with one antibody for immunoprecipitation and another to detect the precipitated protein in western blot.  |
| <b>Reactivity</b>                    | Human   |
| <b>Interspecies Antigen Sequence</b> | Mouse (91%); Rat (92%)  |
| <b>Quality Control Testing</b>       | Immunoprecipitation-Western Blot (IP-WB)<br>Immunoprecipitation of CEBPG transfected lysate using rabbit polyclonal anti-CEBPG and Protein A Magnetic Bead ( <a href="#">U0007</a> ), and immunoblotted with mouse polyclonal anti-CEBPG. |
| <b>Supplied Product</b>              | Antibody pair set content:<br>1. Antibody pair for IP: rabbit polyclonal anti-CEBPG (300 ul)<br>2. Antibody pair for WB: mouse polyclonal anti-CEBPG (50 ul)  |
| <b>Storage Instruction</b>           | Store reagents of the antibody pair set at -20°C or lower. Please aliquot to avoid repeated freeze thaw cycle. Reagents should be returned to -20°C storage immediately after use.  |

## Applications

- Immunoprecipitation-Western Blot

[Protocol Download](#)

## Gene Info — CEBPG

**Entrez GeneID** [1054](#)

**Gene Name** CEBPG

**Gene Alias** GPE1BP, IG/EBP-1

**Gene Description** CCAAT/enhancer binding protein (C/EBP), gamma

**Omim ID** [138972](#)

**Gene Ontology** [Hyperlink](#)

**Gene Summary** The C/EBP family of transcription factors regulates viral and cellular CCAAT/enhancer element-mediated transcription. C/EBP proteins contain the bZIP region, which is characterized by two motifs in the C-terminal half of the protein: a basic region involved in DNA binding and a leucine zipper motif involved in dimerization. The C/EBP family consists of several related proteins, C/EBP alpha, C/EBP beta, C/EBP gamma, and C/EBP delta, that form homodimers and that form heterodimers with each other. CCAAT/enhancer binding protein gamma may cooperate with Fos to bind PRE-I enhancer elements. [provided by RefSeq]

**Other Designations** CCAAT/enhancer binding protein gamma