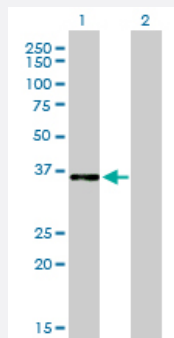


# CEBPE monoclonal antibody (M01), clone 7A4

Catalog # H00001053-M01

Size 100 ug

## Applications

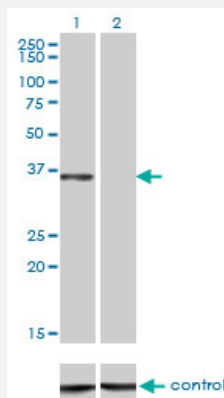


### Western Blot (Transfected lysate)

Western Blot analysis of CEBPE expression in transfected 293T cell line by CEBPE monoclonal antibody (M01), clone 7A4.

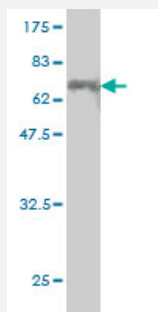
Lane 1: CEBPE transfected lysate(30.6 KDa).

Lane 2: Non-transfected lysate.



### RNAi Knockdown (Antibody validated)

Western blot analysis of CEBPE over-expressed 293 cell line, cotransfected with CEBPE Validated Chimera RNAi ( Cat # H00001053-R01V ) (Lane 2) or non-transfected control (Lane 1). Blot probed with CEBPE monoclonal antibody (M01), clone 7A4 (Cat # H00001053-M01 ). GAPDH ( 36.1 kDa ) used as specificity and loading control.



Western Blot detection against Immunogen (56.65 KDa) .

## Specification

### Product Description

Mouse monoclonal antibody raised against a full length recombinant CEBPE.

<b>Immunogen</b>	CEBPE (AAH35797.2, 1 a.a. ~ 281 a.a) full-length recombinant protein with GST tag. MW of the GST tag alone is 26 KDa.
<b>Sequence</b>	MSHGTYECEPRGGQQPLEFSGGRAGPGELGDMCEHEASIDLSAYIESGEEQLLSDLFAVKPAP EARGLKGPGTAPAFHYLPDPFPAYPPHTFGPDRKALGPGIYSSPGSYDPRAVAVKEEPRGPE GSRAASRGSYNPLQYQVAHCGQTAMHLPPTLAAPGQPLRVLKAPLATAAPPCSPLLKAPSPAGP LHKGKKAVNKDSLEYRLRRERNNAVRKSRDKAKRRILETQQKVLEYMAENERLRSRVEQLTQEL DTLRNLFRRQIPEAANLIKGVGGCS
<b>Host</b>	Mouse
<b>Reactivity</b>	Human
<b>Isotype</b>	IgG2a Kappa
<b>Quality Control Testing</b>	Antibody Reactive Against Recombinant Protein. Western Blot detection against Immunogen (56.65 KDa) .
<b>Storage Buffer</b>	In 1x PBS, pH 7.4
<b>Storage Instruction</b>	Store at -20°C or lower. Aliquot to avoid repeated freezing and thawing.

## Applications

- Western Blot (Transfected lysate)

Western Blot analysis of CEBPE expression in transfected 293T cell line by CEBPE monoclonal antibody (M01), clone 7A4.

Lane 1: CEBPE transfected lysate(30.6 KDa).

Lane 2: Non-transfected lysate.

[Protocol Download](#)

- Western Blot (Recombinant protein)

[Protocol Download](#)

- ELISA

- RNAi Knockdown (Antibody validated)

Western blot analysis of CEBPE over-expressed 293 cell line, cotransfected with CEBPE Validated Chimera RNAi ( Cat # H00001053-R01V ) (Lane 2) or non-transfected control (Lane 1). Blot probed with CEBPE monoclonal antibody (M01), clone 7A4 (Cat # H00001053-M01 ). GAPDH ( 36.1 kDa ) used as specificity and loading control.

[Protocol Download](#)

## Gene Info — CEBPE

**Entrez GeneID** [1053](#)**GeneBank Accession#** [BC035797](#)**Protein Accession#** [AAH35797.2](#)**Gene Name** CEBPE**Gene Alias** C/EBP-epsilon, CRP1**Gene Description** CCAAT/enhancer binding protein (C/EBP), epsilon**Omim ID** [245480](#) [600749](#)**Gene Ontology** [Hyperlink](#)

**Gene Summary** The protein encoded by this gene is a bZIP transcription factor which can bind as a homodimer to certain DNA regulatory regions. It can also form heterodimers with the related protein CEBP-delta . The encoded protein may be essential for terminal differentiation and functional maturation of committed granulocyte progenitor cells. Mutations in this gene have been associated with Specific Granule Deficiency, a rare congenital disorder. Multiple variants of this gene have been described , but the full-length nature of only one has been determined. [provided by RefSeq

**Other Designations** CCAAT/enhancer binding protein epsilon

## Disease

- [Genetic Predisposition to Disease](#)
- [Precursor B-Cell Lymphoblastic Leukemia-Lymphoma](#)