

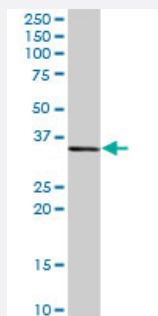
MaxPab®

CEBPE purified MaxPab rabbit polyclonal antibody (D01P)

Catalog # H00001053-D01P

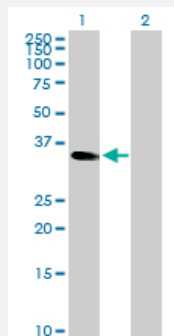
Size 100 ug

Applications



Western Blot (Tissue lysate)

CEBPE MaxPab rabbit polyclonal antibody. Western Blot analysis of CEBPE expression in mouse liver.



Western Blot (Transfected lysate)

Western Blot analysis of CEBPE expression in transfected 293T cell line by CEBPE MaxPab rabbit polyclonal antibody.

Lane 1: CEBPE transfected lysate(30.60 KDa).

Lane 2: Non-transfected lysate.

Specification

Product Description

Rabbit polyclonal antibody raised against a full-length human CEBPE protein.

Immunogen

CEBPE (NP_001796.2, 1 a.a. ~ 281 a.a) full-length human protein.

Sequence

MSHGTYECEPRGGQQPLEFSGGRAGPGELGDMCEHEASIDLSAYIESGEEQLLSDLFAVKPAP
EARGLKGPGTAPFPHYLPDPFPFAYPPHTFGPDRKALGPGIYSSPGSYDPRAVAVKEEPRGPE
GSRAASRGSYNPLQYQVAHCGQTAMHLPPTLAAPGQPLRVLKAPLATAAPPCSPLLKAPSPAGP
LHKGKKAVNKDSLEYRLRRERNNIAVRKSRDKAKRRILETQQKVLEYMAENERLRSRVEQLTQEL
DTLRNLFHQIPEAANLIKGVGGCS

Host

Rabbit

Reactivity	Human, Mouse
Quality Control Testing	Antibody reactive against mammalian transfected lysate.
Storage Buffer	In 1x PBS, pH 7.4
Storage Instruction	Store at -20°C or lower. Aliquot to avoid repeated freezing and thawing.

Applications

- Western Blot (Tissue lysate)

CEBPE MaxPab rabbit polyclonal antibody. Western Blot analysis of CEBPE expression in mouse liver.

[Protocol Download](#)

- Western Blot (Transfected lysate)

Western Blot analysis of CEBPE expression in transfected 293T cell line by CEBPE MaxPab rabbit polyclonal antibody.

Lane 1: CEBPE transfected lysate(30.60 KDa).

Lane 2: Non-transfected lysate.

[Protocol Download](#)

Gene Info — CEBPE

Entrez GeneID	1053
GeneBank Accession#	NM_001805.2
Protein Accession#	NP_001796.2
Gene Name	CEBPE
Gene Alias	C/EBP-epsilon, CRP1
Gene Description	CCAAT/enhancer binding protein (C/EBP), epsilon
Omim ID	245480 600749
Gene Ontology	Hyperlink

Gene Summary

The protein encoded by this gene is a bZIP transcription factor which can bind as a homodimer to certain DNA regulatory regions. It can also form heterodimers with the related protein CEBP-delta . The encoded protein may be essential for terminal differentiation and functional maturation of committed granulocyte progenitor cells. Mutations in this gene have been associated with Specific Granule Deficiency, a rare congenital disorder. Multiple variants of this gene have been described , but the full-length nature of only one has been determined. [provided by RefSeq

Other Designations

CCAAT/enhancer binding protein epsilon

Disease

- [Genetic Predisposition to Disease](#)
- [Precursor B-Cell Lymphoblastic Leukemia-Lymphoma](#)