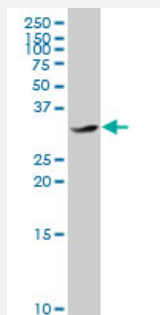


# CEBPE polyclonal antibody (A01)

Catalog # H00001053-A01

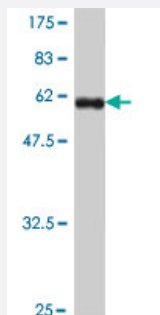
Size 50 uL

## Applications



### Western Blot (Cell lysate)

CEBPE polyclonal antibody (A01), Lot # 050921JC01. Western Blot analysis of CEBPE expression in Daoy.



Western Blot detection against Immunogen (57.02 KDa) .

## Specification

### Product Description

Mouse polyclonal antibody raised against a full-length recombinant CEBPE.

### Immunogen

CEBPE (AAH35797.2, 1 a.a. ~ 281 a.a) full-length recombinant protein with GST tag.

### Sequence

MSHGTYECEPRGGQQPLEFSGGRAGPGELGDMCEHEASIDLSAYIESGEEQLLSDLFAVKPAP  
EARGLKGPGTPAFPHYLPPDPRPFAYPPHTFGPDRKALGPGIYSSPGSYDPRAVAVKEEPRGPE  
GSRAASRGSYNPLQYQVAHCGQTAMHLPTLAAPGQPLRVLKAPLATAAPPCSPLLKAPSPAGP  
LHKGKKAVNKDSLEYRLRRERNNAVRKSRDKAKRRILETQQKVLEYMAENERLRSRVEQLTQEL  
DTLRNLFRQIPEAANLIKGVGGCS

### Host

Mouse

### Reactivity

Human

**Quality Control Testing**

Antibody Reactive Against Recombinant Protein.  
Western Blot detection against Immunogen (57.02 KDa) .

**Storage Buffer**

50 % glycerol

**Storage Instruction**

Store at -20°C or lower. Aliquot to avoid repeated freezing and thawing.

## Applications

- Western Blot (Cell lysate)

CEBPE polyclonal antibody (A01), Lot # 050921JC01. Western Blot analysis of CEBPE expression in Daoy.

[Protocol Download](#)

- Western Blot (Recombinant protein)

[Protocol Download](#)

- ELISA

## Gene Info — CEBPE

**Entrez GeneID**

[1053](#)

**GeneBank Accession#**

[BC035797](#)

**Protein Accession#**

[AAH35797.2](#)

**Gene Name**

CEBPE

**Gene Alias**

C/EBP-epsilon, CRP1

**Gene Description**

CCAAT/enhancer binding protein (C/EBP), epsilon

**Omim ID**

[245480](#) [600749](#)

**Gene Ontology**

[Hyperlink](#)

**Gene Summary**

The protein encoded by this gene is a bZIP transcription factor which can bind as a homodimer to certain DNA regulatory regions. It can also form heterodimers with the related protein CEBP-delta . The encoded protein may be essential for terminal differentiation and functional maturation of committed granulocyte progenitor cells. Mutations in this gene have been associated with Specific Granule Deficiency, a rare congenital disorder. Multiple variants of this gene have been described , but the full-length nature of only one has been determined. [provided by RefSeq

**Other Designations**CCAAT/enhancer binding protein epsilon

---

**Disease**

- [Genetic Predisposition to Disease](#)
- [Precursor B-Cell Lymphoblastic Leukemia-Lymphoma](#)