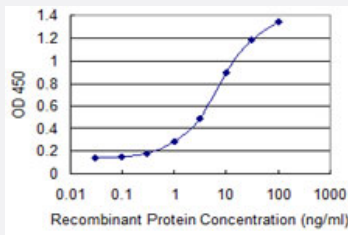


CDX1 monoclonal antibody (M08), clone 2E2

Catalog # H00001044-M08

Size 100 ug

Applications



Sandwich ELISA (Recombinant protein)

Detection limit for recombinant GST tagged CDX1 is 0.1 ng/ml as a capture antibody.

Specification

Product Description	Mouse monoclonal antibody raised against a partial recombinant CDX1.
Immunogen	CDX1 (NP_001795, 126 a.a. ~ 215 a.a) partial recombinant protein with GST tag. MW of the GST tag alone is 26 KDa.
Sequence	GAQRPTPYEWMRRSVAAGGGGGSGKTRTKDKYRVVYTDHQRLELEKEFHYSRYTIRRKSELAAN LGLTERQVKIMWFQNRRAKERKVNKK
Host	Mouse
Reactivity	Human
Interspecies Antigen Sequence	Mouse (97)
Isotype	IgG2a Kappa
Quality Control Testing	Antibody Reactive Against Recombinant Protein.
Storage Buffer	In 1x PBS, pH 7.4
Storage Instruction	Store at -20°C or lower. Aliquot to avoid repeated freezing and thawing.

Applications

- Sandwich ELISA (Recombinant protein)

Detection limit for recombinant GST tagged CDX1 is 0.1 ng/ml as a capture antibody.

[Protocol Download](#)

- ELISA

Gene Info — CDX1

Entrez GeneID	1044
---------------	----------------------

GeneBank Accession#	NM_001804
---------------------	---------------------------

Protein Accession#	NP_001795
--------------------	---------------------------

Gene Name	CDX1
-----------	------

Gene Alias	MGC116915
------------	-----------

Gene Description	caudal type homeobox 1
------------------	------------------------

Omim ID	600746
---------	------------------------

Gene Ontology	Hyperlink
---------------	---------------------------

Gene Summary	This gene is a member of the caudal-related homeobox transcription factor gene family. The encoded DNA-binding protein regulates intestine-specific gene expression and enterocyte differentiation. It has been shown to induce expression of the intestinal alkaline phosphatase gene, and inhibit beta-catenin/T-cell factor transcriptional activity. [provided by RefSeq]
--------------	---

Other Designations	caudal type homeo box transcription factor 1 caudal type homeobox transcription factor 1 caudal-type homeobox protein CDX1
--------------------	--