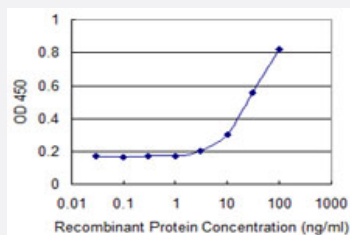


CDX1 monoclonal antibody (M07), clone 4C4

Catalog # H00001044-M07

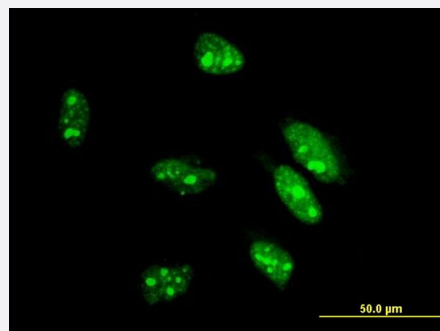
Size 100 ug

Applications



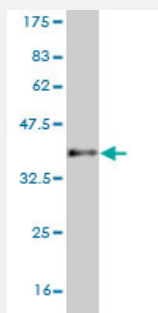
Sandwich ELISA (Recombinant protein)

Detection limit for recombinant GST tagged CDX1 is 1 ng/ml as a capture antibody.



Immunofluorescence

Immunofluorescence of monoclonal antibody to CDX1 on HeLa cell . [antibody concentration 10 ug/ml]



Western Blot detection against Immunogen (35.64 KDa) .

Specification

Product Description

Mouse monoclonal antibody raised against a partial recombinant CDX1.

Immunogen	CDX1 (NP_001795, 126 a.a. ~ 215 a.a) partial recombinant protein with GST tag. MW of the GST tag alone is 26 KDa.
Sequence	GAQRPTPYEWMRRSVAAGGGGGSGKTRTKDKYRVVYTDHQRLELEKEFHYSRYTIRRKSELAAN LGLTERQVKIWFQNRRAKERKVNKK
Host	Mouse
Reactivity	Human
Interspecies Antigen Sequence	Mouse (97)
Isotype	IgG2b Kappa
Quality Control Testing	Antibody Reactive Against Recombinant Protein. Western Blot detection against Immunogen (35.64 KDa) .
Storage Buffer	In 1x PBS, pH 7.4
Storage Instruction	Store at -20°C or lower. Aliquot to avoid repeated freezing and thawing.

Applications

- Western Blot (Recombinant protein)

[Protocol Download](#)

- Sandwich ELISA (Recombinant protein)

Detection limit for recombinant GST tagged CDX1 is 1 ng/ml as a capture antibody.

[Protocol Download](#)

- ELISA

- Immunofluorescence

Immunofluorescence of monoclonal antibody to CDX1 on HeLa cell . [antibody concentration 10 ug/ml]

Gene Info — CDX1

Entrez GeneID [1044](#)

GeneBank Accession# [NM_001804](#)

Protein Accession#	NP_001795
Gene Name	CDX1
Gene Alias	MGC116915
Gene Description	caudal type homeobox 1
Omim ID	600746
Gene Ontology	Hyperlink
Gene Summary	<p>This gene is a member of the caudal-related homeobox transcription factor gene family. The encoded DNA-binding protein regulates intestine-specific gene expression and enterocyte differentiation. It has been shown to induce expression of the intestinal alkaline phosphatase gene, and inhibit beta-catenin/T-cell factor transcriptional activity. [provided by RefSeq]</p>
Other Designations	caudal type homeo box transcription factor 1 caudal type homeobox transcription factor 1 caudal-type homeobox protein CDX1