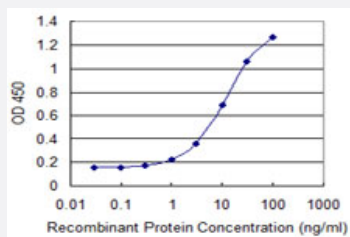


CDX1 monoclonal antibody (M03), clone 3A3

Catalog # H00001044-M03

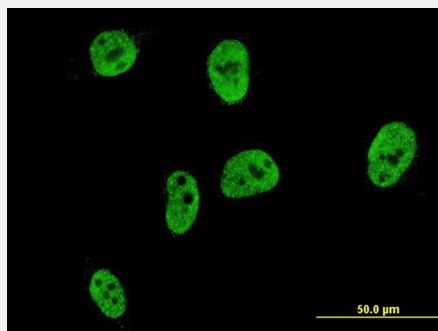
Size 100 ug

Applications



Sandwich ELISA (Recombinant protein)

Detection limit for recombinant GST tagged CDX1 is 0.3 ng/ml as a capture antibody.



Immunofluorescence

Immunofluorescence of monoclonal antibody to CDX1 on HeLa cell . [antibody concentration 10 ug/ml]

Specification

Product Description

Mouse monoclonal antibody raised against a partial recombinant CDX1.

Immunogen

CDX1 (NP_001795, 126 a.a. ~ 215 a.a) partial recombinant protein with GST tag. MW of the GST tag alone is 26 KDa.

Sequence

GAQRPTPYEWMRRSVAAGGGGSGKTRTKDKYRVVYTDHQRLELEKEFHYSRYTIRRKSELAAN
LGLTERQVKIWFQNRRAKERKVNKK

Host

Mouse

Reactivity

Human

Interspecies Antigen Sequence	Mouse (97)
Isotype	IgG2a Kappa
Quality Control Testing	Antibody Reactive Against Recombinant Protein.
Storage Buffer	In 1x PBS, pH 7.4
Storage Instruction	Store at -20°C or lower. Aliquot to avoid repeated freezing and thawing.

Applications

- Sandwich ELISA (Recombinant protein)

Detection limit for recombinant GST tagged CDX1 is 0.3 ng/ml as a capture antibody.

[Protocol Download](#)

- ELISA

- Immunofluorescence

Immunofluorescence of monoclonal antibody to CDX1 on HeLa cell . [antibody concentration 10 ug/ml]

Gene Info — CDX1

Entrez GeneID	1044
GeneBank Accession#	NM_001804
Protein Accession#	NP_001795
Gene Name	CDX1
Gene Alias	MGC116915
Gene Description	caudal type homeobox 1
Omim ID	600746
Gene Ontology	Hyperlink
Gene Summary	This gene is a member of the caudal-related homeobox transcription factor gene family. The encoded DNA-binding protein regulates intestine-specific gene expression and enterocyte differentiation. It has been shown to induce expression of the intestinal alkaline phosphatase gene, and inhibit beta-catenin/T-cell factor transcriptional activity. [provided by RefSeq]

Other Designations

caudal type homeo box transcription factor 1|caudal type homeobox transcription factor 1|caudal-type homeobox protein CDX1
