

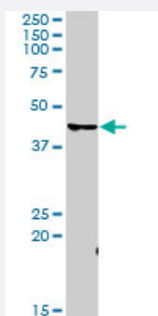
MaxPab®

CDK7 purified MaxPab rabbit polyclonal antibody (D01P)

Catalog # H00001022-D01P

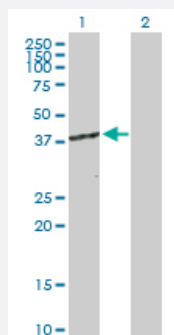
Size 100 ug

Applications



Western Blot (Tissue lysate)

CDK7 MaxPab rabbit polyclonal antibody. Western Blot analysis of CDK7 expression in human pancreas.

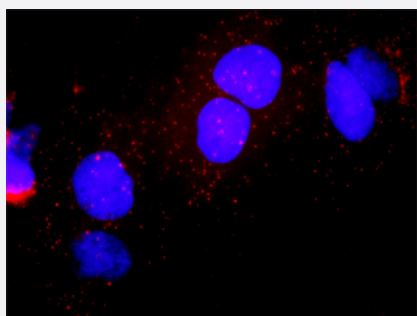


Western Blot (Transfected lysate)

Western Blot analysis of CDK7 expression in transfected 293T cell line ([H00001022-T01](#)) by CDK7 MaxPab polyclonal antibody.

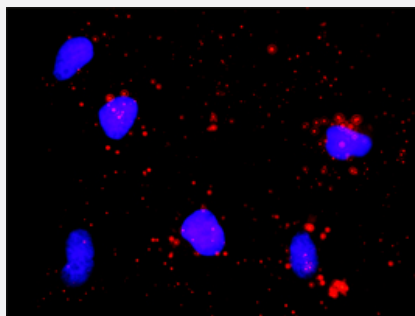
Lane 1: CDK7 transfected lysate(39.00 KDa).

Lane 2: Non-transfected lysate.



In situ Proximity Ligation Assay (Cell)

Proximity Ligation Analysis of protein-protein interactions between CDK7 and E2F1. Huh7 cells were stained with anti-CDK7 rabbit purified polyclonal 1:1200 and anti-E2F1 mouse monoclonal antibody 1:50. Each red dot represents the detection of protein-protein interaction complex, and nuclei were counterstained with DAPI (blue).



In situ Proximity Ligation Assay (Cell)

Proximity Ligation Analysis of protein-protein interactions between CDK7 and E2F1. HeLa cells were stained with anti-CDK7 rabbit purified polyclonal 1:1200 and anti-E2F1 mouse monoclonal antibody 1:50. Each red dot represents the detection of protein-protein interaction complex, and nuclei were counterstained with DAPI (blue).

Specification

Product Description	Rabbit polyclonal antibody raised against a full-length human CDK7 protein.
Immunogen	CDK7 (NP_001790.1, 1 a.a. ~ 346 a.a) full-length human protein.
Sequence	MALDVKSRAKRYEKLDLFLGEGQFATVYKARDKNTNQVAIKKIKLGHRSEAKDGINRTALREIKLLQ ELSHPNIIIGLLDAFGHKSNISLVDFMETDLEVIKDNSLVLTPSHIKAYMLMTLQGLEYLHQHWILHR DLKPNLLLLDENGVLKLADFGLSFGSPNRAYTHQVVTRWYRAPELLFGARMYGVGVDMWAV GCILAEALLLRVPFLPGDSLDQLTRIFETLGTPTTEQWPDMSLPDYVTFKSFGIPLHHIFSAAGD DLLDLIQGLFLFNPCARITATQALKMKYFSNRPGPTPGCQLPRPNCPVETLKEQSNPALAIKRKRT EALQQGGLPKKLIF
Host	Rabbit
Reactivity	Human
Quality Control Testing	Antibody reactive against mammalian transfected lysate.
Storage Buffer	In 1x PBS, pH 7.4
Storage Instruction	Store at -20°C or lower. Aliquot to avoid repeated freezing and thawing.

Applications

● Western Blot (Tissue lysate)

CDK7 MaxPab rabbit polyclonal antibody. Western Blot analysis of CDK7 expression in human pancreas.

[Protocol Download](#)

- Western Blot (Transfected lysate)

Western Blot analysis of CDK7 expression in transfected 293T cell line ([H00001022-T01](#)) by CDK7 MaxPab polyclonal antibody.

Lane 1: CDK7 transfected lysate(39.00 KDa).

Lane 2: Non-transfected lysate.

[Protocol Download](#)

- In situ* Proximity Ligation Assay (Cell)

Proximity Ligation Analysis of protein-protein interactions between CDK7 and E2F1. Huh7 cells were stained with anti-CDK7 rabbit purified polyclonal 1:1200 and anti-E2F1 mouse monoclonal antibody 1:50. Each red dot represents the detection of protein-protein interaction complex, and nuclei were counterstained with DAPI (blue).

- In situ* Proximity Ligation Assay (Cell)

Proximity Ligation Analysis of protein-protein interactions between CDK7 and E2F1. HeLa cells were stained with anti-CDK7 rabbit purified polyclonal 1:1200 and anti-E2F1 mouse monoclonal antibody 1:50. Each red dot represents the detection of protein-protein interaction complex, and nuclei were counterstained with DAPI (blue).

Gene Info — CDK7

Entrez GeneID [1022](#)

GeneBank Accession# [NM_001799.2](#)

Protein Accession# [NP_001790.1](#)

Gene Name CDK7

Gene Alias CAK1, CDKN7, MO15, STK1, p39MO15

Gene Description cyclin-dependent kinase 7

Omim ID [601955](#)

Gene Ontology [Hyperlink](#)

Gene Summary The protein encoded by this gene is a member of the cyclin-dependent protein kinase (CDK) family. CDK family members are highly similar to the gene products of *Saccharomyces cerevisiae* cdc28, and *Schizosaccharomyces pombe* cdc2, and are known to be important regulators of cell cycle progression. This protein forms a trimeric complex with cyclin H and MAT1, which functions as a Cdk-activating kinase (CAK). It is an essential component of the transcription factor TFIIH, that is involved in transcription initiation and DNA repair. This protein is thought to serve as a direct link between the regulation of transcription and the cell cycle. [provided by RefSeq]

Other Designations

39 KDa protein kinase|Cdk-activating kinase|cell division protein kinase 7|cyclin-dependent kinase 7 (MO15 homolog, Xenopus laevis, cdk-activating kinase)|homolog of Xenopus MO15 Cdk-activating kinase|kinase subunit of CAK|serine/threonine kinase stk1|ser

Pathway

- [Cell cycle](#)
- [Nucleotide excision repair](#)

Disease

- [Adenocarcinoma](#)
- [Ataxia telangiectasia](#)
- [Colonic Neoplasms](#)
- [Colorectal Neoplasms](#)
- [Esophageal Neoplasms](#)
- [Genetic Predisposition to Disease](#)
- [Kidney Failure](#)
- [Lung Neoplasms](#)
- [Multiple Sclerosis](#)
- [Ovarian Neoplasms](#)
- [Pulmonary Disease](#)
- [Rectal Neoplasms](#)
- [Urinary Bladder Neoplasms](#)
- [Werner syndrome](#)