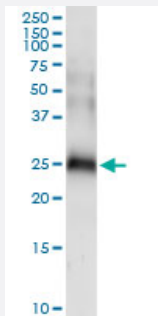


CD70 (Human) IP-WB Antibody Pair

Catalog # H00000970-PW1

Size 1 Set

Applications



Immunoprecipitation of CD70 transfected lysate using rabbit polyclonal anti-CD70 and Protein A Magnetic Bead ([U0007](#)), and immunoblotted with mouse purified polyclonal anti-CD70.

Specification

Product Description	This IP-WB antibody pair set comes with one antibody for immunoprecipitation and another to detect the precipitated protein in western blot.
Reactivity	Human
Quality Control Testing	Immunoprecipitation-Western Blot (IP-WB) Immunoprecipitation of CD70 transfected lysate using rabbit polyclonal anti-CD70 and Protein A Magnetic Bead (U0007), and immunoblotted with mouse purified polyclonal anti-CD70.
Supplied Product	Antibody pair set content: 1. Antibody pair for IP: rabbit polyclonal anti-CD70 (300 ul) 2. Antibody pair for WB: mouse purified polyclonal anti-CD70 (50 ug)
Storage Instruction	Store reagents of the antibody pair set at -20°C or lower. Please aliquot to avoid repeated freeze thaw cycle. Reagents should be returned to -20°C storage immediately after use.

Applications

- Immunoprecipitation-Western Blot

[Protocol Download](#)

Gene Info — CD70

Entrez GeneID [970](#)

Gene Name CD70

Gene Alias CD27L, CD27LG, TNFSF7

Gene Description CD70 molecule

Omim ID [602840](#)

Gene Ontology [Hyperlink](#)

Gene Summary The protein encoded by this gene is a cytokine that belongs to the tumor necrosis factor (TNF) lig and family. This cytokine is a ligand for TNFRSF27/CD27. It is a surface antigen on activated, but not on resting, T and B lymphocytes. It induces proliferation of costimulated T cells, enhances the generation of cytolytic T cells, and contributes to T cell activation. This cytokine is also reported to play a role in regulating B-cell activation, cytotoxic function of natural killer cells, and immunoglobul in sythesis. [provided by RefSeq]

Other Designations CD27 ligand|CD70 antigen|Ki-24 antigen|surface antigen CD70|tumor necrosis factor (ligand) su perfamily, member 7|tumor necrosis factor ligand superfamily, member 7

Pathway

- [Cytokine-cytokine receptor interaction](#)

Disease

- [Genetic Predisposition to Disease](#)
- [Hematologic Diseases](#)
- [Hodgkin Disease](#)
- [Lymphoproliferative Disorders](#)
- [Multiple Myeloma](#)
- [Occupational Diseases](#)
- [Ovarian Neoplasms](#)
- [Waldenstrom Macroglobulinemia](#)

- [Werner syndrome](#)