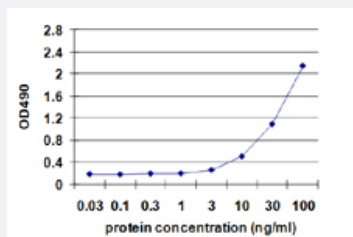


CD70 (Human) Matched Antibody Pair

Catalog # H00000970-AP42

Size 1 Set

Applications



Sandwich ELISA detection sensitivity ranging from 3 ng/ml to 100 ng/ml.

Specification

Product Description

This antibody pair set comes with a matched antibody pair to detect and quantify the protein level of human CD70.

Reactivity

Human

Quality Control Testing

Standard curve using mammalian expressed recombinant protein as an analyte.
Sandwich ELISA detection sensitivity ranging from 3 ng/ml to 100 ng/ml.

Supplied Product

Antibody pair set content:

1. Capture antibody: mouse monoclonal anti-CD70, IgG1 Kappa (100 ug)
2. Detection antibody: biotinylated mouse monoclonal anti-CD70, IgG1 Kappa (50 ug)

*Reagents are sufficient for at least 3-5 x 96 well plates using recommended protocols.

Storage Instruction

Store reagents of the antibody pair set at -20°C or lower. Please aliquot to avoid repeated freeze thaw cycle. Reagents should be returned to -20°C storage immediately after use.

Applications

- ELISA Pair (Recombinant protein)

[Protocol Download](#)

Gene Info — CD70

Entrez GeneID [970](#)

Gene Name CD70

Gene Alias CD27L, CD27LG, TNFSF7

Gene Description CD70 molecule

Omim ID [602840](#)

Gene Ontology [Hyperlink](#)

Gene Summary The protein encoded by this gene is a cytokine that belongs to the tumor necrosis factor (TNF) lig and family. This cytokine is a ligand for TNFRSF27/CD27. It is a surface antigen on activated, but not on resting, T and B lymphocytes. It induces proliferation of costimulated T cells, enhances the generation of cytolytic T cells, and contributes to T cell activation. This cytokine is also reported to play a role in regulating B-cell activation, cytotoxic function of natural killer cells, and immunoglobul in sythesis. [provided by RefSeq]

Other Designations CD27 ligand|CD70 antigen|Ki-24 antigen|surface antigen CD70|tumor necrosis factor (ligand) su perfamily, member 7|tumor necrosis factor ligand superfamily, member 7

Pathway

- [Cytokine-cytokine receptor interaction](#)

Disease

- [Genetic Predisposition to Disease](#)
- [Hematologic Diseases](#)
- [Hodgkin Disease](#)
- [Lymphoproliferative Disorders](#)
- [Multiple Myeloma](#)
- [Occupational Diseases](#)
- [Ovarian Neoplasms](#)
- [Waldenstrom Macroglobulinemia](#)

- [Werner syndrome](#)