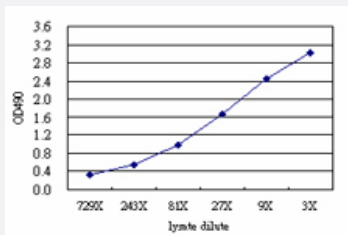


SIGLEC6 (Human) Matched Antibody Pair

Catalog # H00000946-AP51

Size 1 Set

Applications



Sandwich ELISA detection sensitivity ranging from approximately 729x to 3x dilution of the SIGLEC6 293T overexpression lysate (non-denatured).

Specification

Product Description

This antibody pair set comes with a matched antibody pair to detect and quantify the protein level of human SIGLEC6.

Reactivity

Human

Quality Control Testing

Standard curve using SIGLEC6 293T overexpression lysate (non-denatured) as an analyte. Sandwich ELISA detection sensitivity ranging from approximately 729x to 3x dilution of the SIGLEC6 293T overexpression lysate (non-denatured).

Supplied Product

Antibody pair set content:

1. Capture antibody: mouse monoclonal anti-SIGLEC6 (100 ug)
2. Detection antibody: rabbit purified polyclonal anti-SIGLEC6 (50 ug)

*Reagents are sufficient for at least 3-5 x 96 well plates using recommended protocols.

Storage Instruction

Store reagents of the antibody pair set at -20°C or lower. Please aliquot to avoid repeated freeze thaw cycle. Reagents should be returned to -20°C storage immediately after use.

Applications

- ELISA Pair (Transfected lysate)

[Protocol Download](#)

Gene Info — SIGLEC6

Entrez GeneID	946
Gene Name	SIGLEC6
Gene Alias	CD327, CD33L, CD33L1, CDw327, OBBP1, SIGLEC-6
Gene Description	sialic acid binding Ig-like lectin 6
Omim ID	604405
Gene Ontology	Hyperlink
Other Designations	CD33 antigen-like 1 CDw327 antigen OTTHUMP00000164940 OTTHUMP00000164941 OTTHUMP00000164942 Obesity-binding protein 1