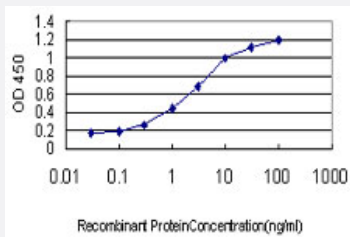


TNFRSF8 monoclonal antibody (M01), clone 3B9

Catalog # H00000943-M01

Size 100 ug

Applications



Sandwich ELISA (Recombinant protein)

Detection limit for recombinant GST tagged TNFRSF8 is approximately 0.03ng/ml as a capture antibody.

Specification

Product Description	Mouse monoclonal antibody raised against a partial recombinant TNFRSF8.
Immunogen	TNFRSF8 (NP_001234, 21 a.a. ~ 133 a.a) partial recombinant protein with GST tag. MW of the GST tag alone is 26 KDa.
Sequence	QDRPFEDTCHGNPSHYDKAVRRCCYRCMPGLFPTQQCPQRPTDCRKQCEPDYYLDEADRCT ACVTC SRDDLVEKTPCAWNSSRVCECRPGMFCSTSAVN SCARCFH SVC PA
Host	Mouse
Reactivity	Human
Interspecies Antigen Sequence	Mouse (63)
Isotype	IgG1 Kappa
Quality Control Testing	Antibody Reactive Against Recombinant Protein.
Storage Buffer	In 1x PBS, pH 7.4
Storage Instruction	Store at -20°C or lower. Aliquot to avoid repeated freezing and thawing.

Applications

- Sandwich ELISA (Recombinant protein)

Detection limit for recombinant GST tagged TNFRSF8 is approximately 0.03ng/ml as a capture antibody.

[Protocol Download](#)

- ELISA

Gene Info — TNFRSF8

Entrez GeneID [943](#)

GeneBank Accession# [NM_001243](#)

Protein Accession# [NP_001234](#)

Gene Name TNFRSF8

Gene Alias CD30, D1S166E, Ki-1

Gene Description tumor necrosis factor receptor superfamily, member 8

Omim ID [153243](#)

Gene Ontology [Hyperlink](#)

Gene Summary The protein encoded by this gene is a member of the TNF-receptor superfamily. This receptor is expressed by activated, but not by resting, T and B cells. TRAF2 and TRAF5 can interact with this receptor, and mediate the signal transduction that leads to the activation of NF-kappaB. This receptor is a positive regulator of apoptosis, and also has been shown to limit the proliferative potential of autoreactive CD8 effector T cells and protect the body against autoimmunity. Two alternatively spliced transcript variants of this gene encoding distinct isoforms have been reported. [provided by RefSeq]

Other Designations CD30 antigen|CD30L receptor|Ki-1 antigen|OTTHUMP00000001783|cytokine receptor CD30|lymphocyte activation antigen CD30

Pathway

- [Cytokine-cytokine receptor interaction](#)

Disease

- [Asthma](#)
- [Diabetes Mellitus](#)
- [Genetic Predisposition to Disease](#)
- [Hematologic Diseases](#)
- [HIV Infections](#)
- [Kidney Failure](#)
- [Multiple Myeloma](#)
- [Occupational Diseases](#)
- [Tobacco Use Disorder](#)