

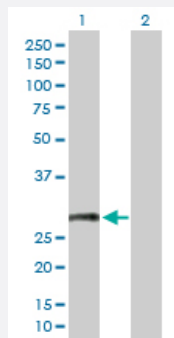
MaxPab®

CD8B purified MaxPab rabbit polyclonal antibody (D01P)

Catalog # H00000926-D01P

Size 100 ug

Applications



Western Blot (Transfected lysate)

Western Blot analysis of CD8B expression in transfected 293T cell line ([H00000926-T02](#)) by CD8B MaxPab polyclonal antibody.

Lane 1: CD8B transfected lysate (27.20 KDa).

Lane 2: Non-transfected lysate.

Specification

Product Description	Rabbit polyclonal antibody raised against a full-length human CD8B protein.
Immunogen	CD8B (NP_757362.1, 1 a.a. ~ 243 a.a) full-length human protein.
Sequence	MRPRLWLLAAQLTVLHGNSVLQQTPAYIKVQTNKMVMLSCEAKISLSNMRIYWLRRQAPSSDS HHEFLALWDSAKGTIHGEEVEQEKIAVFRDASRFILNLTSVKPEDSGIYFCMVGSPELTFGKGTQL SVVDFLPTTAQPTKKSTLKKRVCRLPRPETQKGPLCSPITLGLLVAGVLVLLVSLGVAIHLCCRRR RARLRFMKQPQGEISGTFVPQCLHGYYSNNTTSQKLLNPWILKT
Host	Rabbit
Reactivity	Human
Quality Control Testing	Antibody reactive against mammalian transfected lysate.
Storage Buffer	In 1x PBS, pH 7.4
Storage Instruction	Store at -20°C or lower. Aliquot to avoid repeated freezing and thawing.

Applications

- Western Blot (Transfected lysate)

Western Blot analysis of CD8B expression in transfected 293T cell line ([H00000926-T02](#)) by CD8B MaxPab polyclonal antibody.

Lane 1: CD8B transfected lysate(27.20 KDa).

Lane 2: Non-transfected lysate.

[Protocol Download](#)

Gene Info — CD8B

Entrez GeneID [926](#)

GeneBank Accession# [NM_172213](#)

Protein Accession# [NP_757362.1](#)

Gene Name CD8B

Gene Alias CD8B1, LYT3, Leu2, Ly3, MGC119115

Gene Description CD8b molecule

Omim ID [186730](#)

Gene Ontology [Hyperlink](#)

Gene Summary

The CD8 antigen is a cell surface glycoprotein found on most cytotoxic T lymphocytes that mediates efficient cell-cell interactions within the immune system. The CD8 antigen, acting as a coreceptor, and the T-cell receptor on the T lymphocyte recognize antigen displayed by an antigen presenting cell (APC) in the context of class I MHC molecules. The functional coreceptor is either a homodimer composed of two alpha chains, or a heterodimer composed of one alpha and one beta chain. Both alpha and beta chains share significant homology to immunoglobulin variable light chains. This gene encodes the CD8 beta chain isoforms. Multiple alternatively spliced transcript variants encoding distinct membrane associated or secreted isoforms have been described. A pseudogene, also located on chromosome 2, has been identified. [provided by RefSeq]

Other Designations

CD8 antigen, beta polypeptide (p37)|CD8 antigen, beta polypeptide 1 (p37)|CD8b antigen|OTTHUMP00000160761|T lymphocyte surface glycoprotein beta chain|T-cell surface glycoprotein CD8 beta chain

Pathway

- [Antigen processing and presentation](#)
- [Cell adhesion molecules \(CAMs\)](#)
- [Hematopoietic cell lineage](#)
- [Primary immunodeficiency](#)
- [T cell receptor signaling pathway](#)

Disease

- [Tobacco Use Disorder](#)