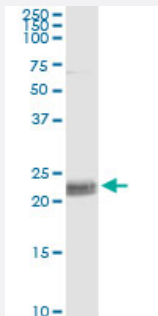


CD8A monoclonal antibody (M10), clone 4B9

Catalog # H00000925-M10

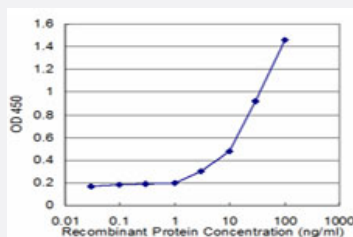
Size 100 ug

Applications



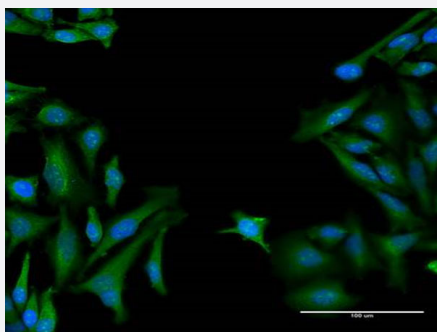
Immunoprecipitation

Immunoprecipitation of CD8A transfected lysate using anti-CD8A monoclonal antibody and Protein A Magnetic Bead, and immunoblotted with CD8A MaxPab rabbit polyclonal antibody.



Sandwich ELISA (Recombinant protein)

Detection limit for recombinant GST tagged CD8A is approximately 3ng/ml as a capture antibody.



Immunofluorescence

Immunofluorescence of monoclonal antibody to CD8A on HeLa cell . [antibody concentration 40 ug/ml]

Specification

Product Description

Mouse monoclonal antibody raised against a full-length recombinant CD8A.

Immunogen	CD8A (AAH25715, 1 a.a. ~ 235 a.a) full-length recombinant protein with GST tag. MW of the GST tag alone is 26 KDa.
Sequence	MALPVTALLLPLALLLHAARPSQFRVSPLDRTWNLGETVELKCQVLLSNPTSGCSWLFQPRGAA ASPTFLLYLSQNKPKAAEGLDTQRFSGKRLGDTFVLTLSDFRRENEGCYFCSALSNSIMYFSHFV PVFLPAKPTTTPAPRPPTPAPTIASQPLSLRPEACRPAAGGAVHTRGLDFACDIYWAPLAGTCGV LLLSLVITLYCNHRNRRRVCKCPRPVVKSGDKPSLSARYV
Host	Mouse
Reactivity	Human
Isotype	IgG2b Kappa
Quality Control Testing	Antibody Reactive Against Recombinant Protein.
Storage Buffer	In 1x PBS, pH 7.4
Storage Instruction	Store at -20°C or lower. Aliquot to avoid repeated freezing and thawing.

Applications

- Immunoprecipitation

Immunoprecipitation of CD8A transfected lysate using anti-CD8A monoclonal antibody and Protein A Magnetic Bead, and immunoblotted with CD8A MaxPab rabbit polyclonal antibody.

[Protocol Download](#)

- Sandwich ELISA (Recombinant protein)

Detection limit for recombinant GST tagged CD8A is approximately 3ng/ml as a capture antibody.

[Protocol Download](#)

- ELISA

- Immunofluorescence

Immunofluorescence of monoclonal antibody to CD8A on HeLa cell . [antibody concentration 40 ug/ml]

Gene Info — CD8A

Entrez GeneID

[925](#)

GeneBank Accession#

[BC025715](#)

Protein Accession#	AAH25715
Gene Name	CD8A
Gene Alias	CD8, Leu2, MAL, p32
Gene Description	CD8a molecule
Omim ID	186910 608957
Gene Ontology	Hyperlink
Gene Summary	<p>The CD8 antigen is a cell surface glycoprotein found on most cytotoxic T lymphocytes that mediates efficient cell-cell interactions within the immune system. The CD8 antigen acts as a coreceptor with the T-cell receptor on the T lymphocyte to recognize antigens displayed by an antigen presenting cell (APC) in the context of class I MHC molecules. The coreceptor functions as either a homodimer composed of two alpha chains, or as a heterodimer composed of one alpha and one beta chain. Both alpha and beta chains share significant homology to immunoglobulin variable light chains. This gene encodes the CD8 alpha chain isoforms. Multiple transcript variants encoding different isoforms have been found for this gene. [provided by RefSeq]</p>
Other Designations	CD8 antigen alpha polypeptide CD8 antigen, alpha polypeptide (p32) Leu2 T-lymphocyte antigen OKT8 T-cell antigen T cell co-receptor T-cell antigen Leu2 T-cell surface glycoprotein CD8 alpha chain T-lymphocyte differentiation antigen T8/Leu-2 T8 T-cell ant

Pathway

- [Antigen processing and presentation](#)
- [Cell adhesion molecules \(CAMs\)](#)
- [Hematopoietic cell lineage](#)
- [Primary immunodeficiency](#)
- [T cell receptor signaling pathway](#)