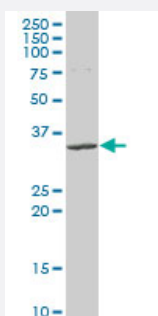


CD8A polyclonal antibody (A01)

Catalog # H00000925-A01

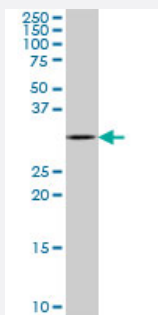
Size 50 uL

Applications



Western Blot (Cell lysate)

CD8A polyclonal antibody (A01), Lot # 050912JC01. Western Blot analysis of CD8A expression in Daoy.



Western Blot (Cell lysate)

CD8A polyclonal antibody (A01), Lot # ABNOVA060619QCS1. Western Blot analysis of CD8A expression in SJCRH30.

Specification

| | |
|--------------------------------|--|
| Product Description | Mouse polyclonal antibody raised against a partial recombinant CD8A. |
| Immunogen | CD8A (NP_001759, 22 a.a. ~ 131 a.a) partial recombinant protein with GST tag. |
| Sequence | SQFRVSPLDRTWNLGETVELKCQVLLSNPTSGCSWLFQPRGAAASPTFLLYLSQNKPKAAEGLD TQRFSGKRLGDTFVLTLSDFRRENEGYYFCSALSNSIMYFSHFVPV |
| Host | Mouse |
| Reactivity | Human |
| Quality Control Testing | Antibody Reactive Against Recombinant Protein. |

| | |
|----------------|---------------|
| Storage Buffer | 50 % glycerol |
|----------------|---------------|

| | |
|---------------------|--|
| Storage Instruction | Store at -20°C or lower. Aliquot to avoid repeated freezing and thawing. |
|---------------------|--|

Applications

- Western Blot (Cell lysate)

CD8A polyclonal antibody (A01), Lot # 050912JC01. Western Blot analysis of CD8A expression in Daoy.

[Protocol Download](#)

- Western Blot (Cell lysate)

CD8A polyclonal antibody (A01), Lot # ABNOVA060619QCS1. Western Blot analysis of CD8A expression in SJCRH30.

[Protocol Download](#)

- ELISA

Gene Info — CD8A

| | |
|---------------|---------------------|
| Entrez GeneID | 925 |
|---------------|---------------------|

| | |
|---------------------|---------------------------|
| GeneBank Accession# | NM_001768 |
|---------------------|---------------------------|

| | |
|--------------------|---------------------------|
| Protein Accession# | NP_001759 |
|--------------------|---------------------------|

| | |
|-----------|------|
| Gene Name | CD8A |
|-----------|------|

| | |
|------------|---------------------|
| Gene Alias | CD8, Leu2, MAL, p32 |
|------------|---------------------|

| | |
|------------------|---------------|
| Gene Description | CD8a molecule |
|------------------|---------------|

| | |
|---------|-------------------------------|
| Omim ID | 186910 608957 |
|---------|-------------------------------|

| | |
|---------------|---------------------------|
| Gene Ontology | Hyperlink |
|---------------|---------------------------|

| | |
|--------------|--|
| Gene Summary | <p>The CD8 antigen is a cell surface glycoprotein found on most cytotoxic T lymphocytes that mediates efficient cell-cell interactions within the immune system. The CD8 antigen acts as a coreceptor with the T-cell receptor on the T lymphocyte to recognize antigens displayed by an antigen presenting cell (APC) in the context of class I MHC molecules. The coreceptor functions as either a homodimer composed of two alpha chains, or as a heterodimer composed of one alpha and one beta chain. Both alpha and beta chains share significant homology to immunoglobulin variable light chains. This gene encodes the CD8 alpha chain isoforms. Multiple transcript variants encoding different isoforms have been found for this gene. [provided by RefSeq]</p> |
|--------------|--|

Other Designations

CD8 antigen alpha polypeptide|CD8 antigen, alpha polypeptide (p32)|Leu2 T-lymphocyte antigen|OKT8 T-cell antigen|T cell co-receptor|T-cell antigen Leu2|T-cell surface glycoprotein CD8 alpha chain|T-lymphocyte differentiation antigen T8/Leu-2|T8 T-cell ant

Pathway

- [Antigen processing and presentation](#)
- [Cell adhesion molecules \(CAMs\)](#)
- [Hematopoietic cell lineage](#)
- [Primary immunodeficiency](#)
- [T cell receptor signaling pathway](#)