

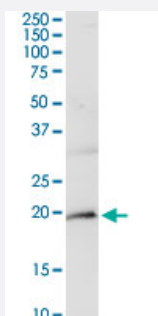
MaxPab®

CD247 purified MaxPab rabbit polyclonal antibody (D01P)

Catalog # H00000919-D01P

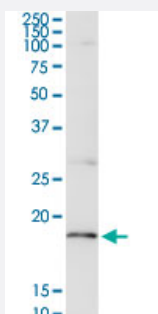
Size 100 ug

Applications



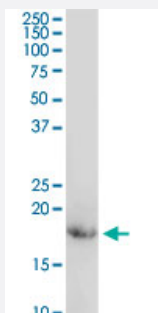
Western Blot (Tissue lysate)

CD247 MaxPab rabbit polyclonal antibody. Western Blot analysis of CD247 expression in mouse brain.



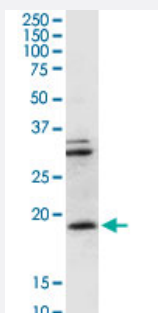
Western Blot (Tissue lysate)

CD247 MaxPab rabbit polyclonal antibody. Western Blot analysis of CD247 expression in rat brain.



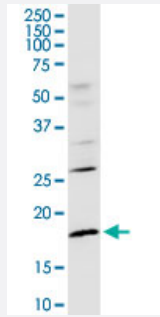
Western Blot (Tissue lysate)

CD247 MaxPab rabbit polyclonal antibody. Western Blot analysis of CD247 expression in mouse kidney.



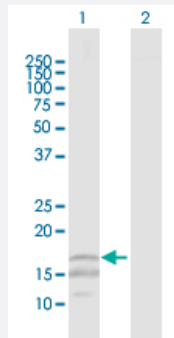
Western Blot (Cell lysate)

CD247 MaxPab rabbit polyclonal antibody. Western Blot analysis of CD247 expression in Raw 264.7.



Western Blot (Cell lysate)

CD247 MaxPab rabbit polyclonal antibody. Western Blot analysis of CD247 expression in IMR-32.

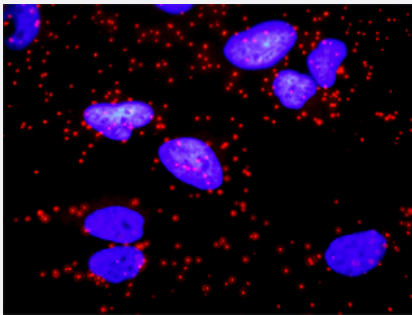


Western Blot (Transfected lysate)

Western Blot analysis of CD247 expression in transfected 293T cell line ([H00000919-T01](#)) by CD247 MaxPab polyclonal antibody.

Lane 1: CD247 transfected lysate(18.70 KDa).

Lane 2: Non-transfected lysate.



In situ Proximity Ligation Assay (Cell)

Proximity Ligation Analysis of protein-protein interactions between CD247 and CD3E. HeLa cells were stained with anti-CD247 rabbit purified polyclonal 1:1200 and anti-CD3E mouse monoclonal antibody 1:50. Each red dot represents the detection of protein-protein interaction complex, and nuclei were counterstained with DAPI (blue).

Specification

Product Description	Rabbit polyclonal antibody raised against a full-length human CD247 protein.
Immunogen	CD247 (NP_932170.1, 1 a.a. ~ 164 a.a) full-length human protein.
Sequence	MKWKALFTAAILQAQLPITEAQSFGLLDPKLCYLLDGILFIYGVILTALFLRVKFSRSADAPAYQQGQ NQLYNELNLGRREEYDVLDKRRGRDPEMGGKPQRRKNPQEGLYNELQKDKMAEAYSEIGMKGE RRRGKGHDGLYQGLSTATKDTYDALHMQALPPR
Host	Rabbit
Reactivity	Human, Mouse, Rat
Interspecies Antigen Sequence	Mouse (81); Rat (85)
Quality Control Testing	Antibody reactive against mammalian transfected lysate.

Storage Buffer

In 1x PBS, pH 7.4

Storage Instruction

Store at -20°C or lower. Aliquot to avoid repeated freezing and thawing.

Applications

- Western Blot (Tissue lysate)

CD247 MaxPab rabbit polyclonal antibody. Western Blot analysis of CD247 expression in mouse brain.

[Protocol Download](#)

- Western Blot (Tissue lysate)

CD247 MaxPab rabbit polyclonal antibody. Western Blot analysis of CD247 expression in rat brain.

[Protocol Download](#)

- Western Blot (Tissue lysate)

CD247 MaxPab rabbit polyclonal antibody. Western Blot analysis of CD247 expression in mouse kidney.

[Protocol Download](#)

- Western Blot (Cell lysate)

CD247 MaxPab rabbit polyclonal antibody. Western Blot analysis of CD247 expression in Raw 264.7.

[Protocol Download](#)

- Western Blot (Cell lysate)

CD247 MaxPab rabbit polyclonal antibody. Western Blot analysis of CD247 expression in IMR-32.

[Protocol Download](#)

- Western Blot (Transfected lysate)

Western Blot analysis of CD247 expression in transfected 293T cell line ([H00000919-T01](#)) by CD247 MaxPab polyclonal antibody.

Lane 1: CD247 transfected lysate(18.70 KDa).

Lane 2: Non-transfected lysate.

[Protocol Download](#)

- *In situ* Proximity Ligation Assay (Cell)

Proximity Ligation Analysis of protein-protein interactions between CD247 and CD3E. HeLa cells were stained with anti-CD247 rabbit purified polyclonal 1:1200 and anti-CD3E mouse monoclonal antibody 1:50. Each red dot represents the detection of protein-protein interaction complex, and nuclei were counterstained with DAPI (blue).

Gene Info — CD247

Entrez GeneID [919](#)

GeneBank Accession# [NM_198053](#)

Protein Accession# [NP_932170.1](#)

Gene Name CD247

Gene Alias CD3-ZETA, CD3H, CD3Q, CD3Z, T3Z, TCRZ

Gene Description CD247 molecule

Omim ID [186780 610163](#)

Gene Ontology [Hyperlink](#)

Gene Summary The protein encoded by this gene is T-cell receptor zeta, which together with T-cell receptor alpha/beta and gamma/delta heterodimers, and with CD3-gamma, -delta and -epsilon, forms the T-cell receptor-CD3 complex. The zeta chain plays an important role in coupling antigen recognition to several intracellular signal-transduction pathways. Low expression of the antigen results in impaired immune response. Two alternatively spliced transcript variants encoding distinct isoforms have been found for this gene. [provided by RefSeq]

Other Designations CD247 antigen, zeta subunit|CD3Z antigen, zeta polypeptide (TiT3 complex)|OTTHUMP00000032544|T-cell antigen receptor complex, zeta subunit of CD3|T-cell receptor T3 zeta chain|T-cell receptor zeta chain|T-cell surface glycoprotein CD3 zeta chain

Pathway

- [Natural killer cell mediated cytotoxicity](#)
- [T cell receptor signaling pathway](#)

Disease

- [Arthritis](#)

- [Genetic Predisposition to Disease](#)
- [Hypertension](#)
- [Lupus Erythematosus](#)
- [Osteoporosis](#)
- [Scleroderma](#)