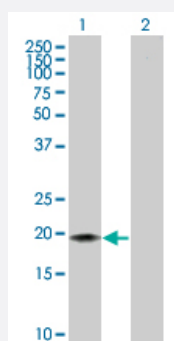


# CD3D 293T Cell Transient Overexpression Lysate(Denatured)

Catalog # H00000915-T01

Size 100 uL

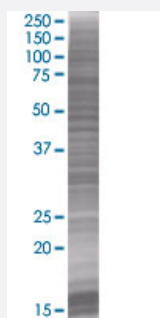
## Applications



### Western Blot

Lane 1: CD3D transfected lysate ( 18.9 KDa)

Lane 2: Non-transfected lysate.



### SDS-PAGE Gel

CD3D transfected lysate.

## Specification

**Transfected Cell Line** 293T

**Plasmid** pCMV-CD3D full-length

**Host** Human

**Theoretical MW (kDa)** 18.92

**Quality Control Testing** Transient overexpression cell lysate was tested with Anti-CD3D antibody ([H00000915-B01](#)) by Western Blots.  
Western Blot  
Lane 1: CD3D transfected lysate ( 18.9 KDa)  
Lane 2: Non-transfected lysate.  
SDS-PAGE Gel  
CD3D transfected lysate.

Storage Buffer	1X Sample Buffer (50 mM Tris-HCl, 2% SDS, 10% glycerol, 300 mM 2-mercaptoethanol, 0.01% Bromophenol blue)
Storage Instruction	Store at -80°C. Aliquot to avoid repeated freezing and thawing.

## Applications

- Western Blot

## Gene Info — CD3D

Entrez GeneID	<a href="#">915</a>
GeneBank Accession#	<a href="#">NM_000732</a>
Protein Accession#	<a href="#">NP_000723</a>
Gene Name	CD3D
Gene Alias	CD3-DELTA, T3D
Gene Description	CD3d molecule, delta (CD3-TCR complex)
Omim ID	<a href="#">186790 600802</a>
Gene Ontology	<a href="#">Hyperlink</a>

Gene Summary	The protein encoded by this gene is part of the T-cell receptor/CD3 complex (TCR/CD3 complex) and is involved in T-cell development and signal transduction. The encoded membrane protein represents the delta subunit of the CD3 complex, and along with four other CD3 subunits, binds either TCR alpha/beta or TCR gamma/delta to form the TCR/CD3 complex on the surface of T-cells. Defects in this gene are a cause of severe combined immunodeficiency autosomal recessive T-cell-negative/B-cell-positive/NK-cell-positive (SCIDBNK). Two transcript variants encoding different isoforms have been found for this gene. Other variants may also exist, but the full-length nature of their transcripts has yet to be defined. [provided by RefSeq]
--------------	---

Other Designations	CD3D antigen, delta polypeptide CD3d antigen, delta polypeptide (TiT3 complex) T-cell receptor T3 delta chain T-cell surface glycoprotein CD3 delta chain
--------------------	---

## Pathway

- [Hematopoietic cell lineage](#)
- [Primary immunodeficiency](#)

- [T cell receptor signaling pathway](#)

## Disease

- [Celiac Disease](#)
- [Genetic Predisposition to Disease](#)