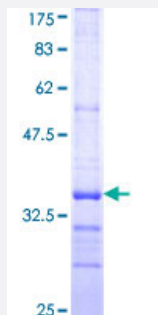


CD3D (Human) Recombinant Protein (Q01)

Catalog # H00000915-Q01

Size 25 ug, 10 ug

Applications



Specification

Product Description	Human CD3D partial ORF (NP_000723, 22 a.a. - 100 a.a.) recombinant protein with GST-tag at N-terminal.
Sequence	FKIPIEELEDRLFVNCNTSITWVEGTGTLSDITRLDLGKRILDPRGYRCNGTDYKDKESTVQVHYRMCQSCVELD
Host	Wheat Germ (in vitro)
Theoretical MW (kDa)	34.43
Preparation Method	in vitro wheat germ expression system
Purification	Glutathione Sepharose 4 Fast Flow
Quality Control Testing	12.5% SDS-PAGE Stained with Coomassie Blue.
Storage Buffer	50 mM Tris-HCl, 10 mM reduced Glutathione, pH=8.0 in the elution buffer.
Storage Instruction	Store at -80°C. Aliquot to avoid repeated freezing and thawing.
Note	Best use within three months from the date of receipt of this protein.

Applications

- Enzyme-linked Immunoabsorbent Assay
- Western Blot (Recombinant protein)
- Antibody Production
- Protein Array

Gene Info — CD3D

Entrez GeneID [915](#)

GeneBank Accession# [NM_000732](#)

Protein Accession# [NP_000723](#)

Gene Name CD3D

Gene Alias CD3-DELTA, T3D

Gene Description CD3d molecule, delta (CD3-TCR complex)

Omim ID [186790 600802](#)

Gene Ontology [Hyperlink](#)

Gene Summary The protein encoded by this gene is part of the T-cell receptor/CD3 complex (TCR/CD3 complex) and is involved in T-cell development and signal transduction. The encoded membrane protein represents the delta subunit of the CD3 complex, and along with four other CD3 subunits, binds either TCR alpha/beta or TCR gamma/delta to form the TCR/CD3 complex on the surface of T-cells. Defects in this gene are a cause of severe combined immunodeficiency autosomal recessive T-cell-negative/B-cell-positive/NK-cell-positive (SCIDBNK). Two transcript variants encoding different isoforms have been found for this gene. Other variants may also exist, but the full-length natures of their transcripts has yet to be defined. [provided by RefSeq]

Other Designations CD3D antigen, delta polypeptide|CD3d antigen, delta polypeptide (TIT3 complex)|T-cell receptor T3 delta chain|T-cell surface glycoprotein CD3 delta chain

Pathway

- [Hematopoietic cell lineage](#)
- [Primary immunodeficiency](#)

- [T cell receptor signaling pathway](#)

Disease

- [Celiac Disease](#)
- [Genetic Predisposition to Disease](#)