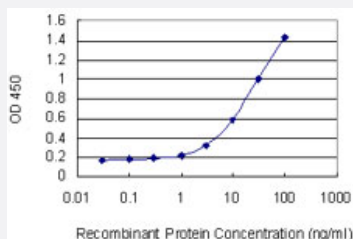


# CD1C monoclonal antibody (M02), clone 4B11

Catalog # H00000911-M02

Size 100 ug

## Applications



### Sandwich ELISA (Recombinant protein)

Detection limit for recombinant GST tagged CD1C is 0.3 ng/ml as a capture antibody.

## Specification

<b>Product Description</b>	Mouse monoclonal antibody raised against a partial recombinant CD1C.
<b>Immunogen</b>	CD1C (NP_001756, 77 a.a. ~ 185 a.a) partial recombinant protein with GST tag. MW of the GST tag alone is 26 KDa.
<b>Sequence</b>	SNEELSDLELLFRFYLFGLTREIQDHASQDYSKYPFEVQVKAGCELHSGKSPEGFFQVAFNGLDL LSFQNTTWVPSPGCGSLAQSVCHLLNHQYEGVTETVYNLIRSTC
<b>Host</b>	Mouse
<b>Reactivity</b>	Human
<b>Isotype</b>	IgG2a Kappa
<b>Quality Control Testing</b>	Antibody Reactive Against Recombinant Protein.
<b>Storage Buffer</b>	In 1x PBS, pH 7.4
<b>Storage Instruction</b>	Store at -20°C or lower. Aliquot to avoid repeated freezing and thawing.

## Applications

- Sandwich ELISA (Recombinant protein)

Detection limit for recombinant GST tagged CD1C is 0.3 ng/ml as a capture antibody.

[Protocol Download](#)

- ELISA

## Gene Info — CD1C

Entrez GeneID [911](#)

GeneBank Accession# [NM\\_001765](#)

Protein Accession# [NP\\_001756](#)

Gene Name CD1C

Gene Alias BDCA1, CD1, CD1A, R7

Gene Description CD1c molecule

Omim ID [188340](#)

Gene Ontology [Hyperlink](#)

**Gene Summary** This gene encodes a member of the CD1 family of transmembrane glycoproteins, which are structurally related to the major histocompatibility complex (MHC) proteins and form heterodimers with beta-2-microglobulin. The CD1 proteins mediate the presentation of primarily lipid and glycolipid antigens of self or microbial origin to T cells. The human genome contains five CD1 family genes organized in a cluster on chromosome 1. The CD1 family members are thought to differ in their cellular localization and specificity for particular lipid ligands. The protein encoded by this gene is broadly distributed throughout the endocytic system via a tyrosine-based motif in the cytoplasmic tail. Alternatively spliced transcript variants of this gene have been observed, but their full-length nature is not known. [provided by RefSeq]

**Other Designations** CD1C antigen|CD1C antigen, c polypeptide|OTTHUMP00000018909|T-cell surface glycoprotein CD1c|cortical thymocyte antigen CD1C|differentiation antigen CD1-alpha-3

## Pathway

- [Hematopoietic cell lineage](#)

## Disease

- [Lung Diseases](#)
- [Mycobacterium Infections](#)