

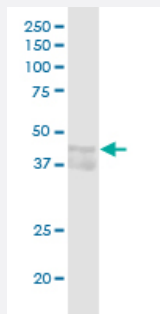
MaxPab®

CCNE1 purified MaxPab rabbit polyclonal antibody (D01P)

Catalog # H00000898-D01P

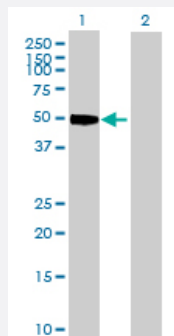
Size 100 ug

Applications



Western Blot (Tissue lysate)

CCNE1 MaxPab rabbit polyclonal antibody. Western Blot analysis of CCNE1 expression in mouse liver.

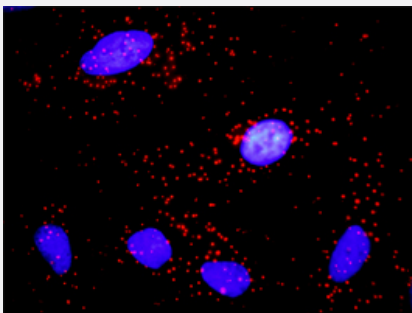


Western Blot (Transfected lysate)

Western Blot analysis of CCNE1 expression in transfected 293T cell line ([H00000898-T03](#)) by CCNE1 MaxPab polyclonal antibody.

Lane 1: CCNE1 transfected lysate(47.10 KDa).

Lane 2: Non-transfected lysate.



In situ Proximity Ligation Assay (Cell)

Proximity Ligation Analysis of protein-protein interactions between CCNE1 and CDKN1A. HeLa cells were stained with anti-CCNE1 rabbit purified polyclonal 1:1200 and anti-CDKN1A mouse monoclonal antibody 1:50. Each red dot represents the detection of protein-protein interaction complex, and nuclei were counterstained with DAPI (blue).

Specification

Product Description

Rabbit polyclonal antibody raised against a full-length human CCNE1 protein.

Immunogen	CCNE1 (NP_001229.1, 1 a.a. ~ 410 a.a) full-length human protein.
Sequence	MPRERRERDAKERDTMKEDGGAEFSSARSRKRKANVTVFLQDPDEEMAKIDRTARDQCGSQPW DNNAVCADPCSLIPTDKEDDDRVPNSTCKPRIAPSRGSPVLSWANREEVWKIMLNKEKTY LRDQHFLQHPQLQPKMRAILLDWLMEVCEVYKLHRETFYLAQDFFDRYMATQENVVKTLQLIGI SSLFIAAKLEEMYPKLLHQFAYVTDGACSGDEILTMELMIMKALKWRLSPLTVSWLNVYMQVAYLN DLHEVLLPQYPQQIFIQIAELLDLCVLDVDCLEFPYGILAAALYHFSSSELMQKVSGYQWCDIENC VKWMVPFAMVIRETGSSSKLKHFRGVADEDAHNIQTHRDSLDDKARAKKAMLSEQNRASPLPS GLLTPPQSGKKQSSGPEMA
Host	Rabbit
Reactivity	Human, Mouse
Quality Control Testing	Antibody reactive against mammalian transfected lysate.
Storage Buffer	In 1x PBS, pH 7.4
Storage Instruction	Store at -20°C or lower. Aliquot to avoid repeated freezing and thawing.

Applications

- Western Blot (Tissue lysate)

CCNE1 MaxPab rabbit polyclonal antibody. Western Blot analysis of CCNE1 expression in mouse liver.

[Protocol Download](#)

- Western Blot (Transfected lysate)

Western Blot analysis of CCNE1 expression in transfected 293T cell line ([H00000898-T03](#)) by CCNE1 MaxPab polyclonal antibody.

Lane 1: CCNE1 transfected lysate(47.10 KDa).

Lane 2: Non-transfected lysate.

[Protocol Download](#)

- In situ* Proximity Ligation Assay (Cell)

Proximity Ligation Analysis of protein-protein interactions between CCNE1 and CDKN1A. HeLa cells were stained with anti-CCNE1 rabbit purified polyclonal 1:1200 and anti-CDKN1A mouse monoclonal antibody 1:50. Each red dot represents the detection of protein-protein interaction complex, and nuclei were counterstained with DAPI (blue).

Gene Info — CCNE1

Entrez GeneID

[898](#)

GeneBank Accession#	NM_001238
Protein Accession#	NP_001229.1
Gene Name	CCNE1
Gene Alias	CCNE
Gene Description	cyclin E1
Omim ID	123837
Gene Ontology	Hyperlink
Gene Summary	<p>The protein encoded by this gene belongs to the highly conserved cyclin family, whose members are characterized by a dramatic periodicity in protein abundance through the cell cycle. Cyclins function as regulators of CDK kinases. Different cyclins exhibit distinct expression and degradation patterns which contribute to the temporal coordination of each mitotic event. This cyclin forms a complex with and functions as a regulatory subunit of CDK2, whose activity is required for cell cycle G1/S transition. This protein accumulates at the G1-S phase boundary and is degraded as cells progress through S phase. Overexpression of this gene has been observed in many tumors, which results in chromosome instability, and thus may contribute to tumorigenesis. This protein was found to associate with, and be involved in, the phosphorylation of NPAT protein (nuclear protein mapped to the ATM locus), which participates in cell-cycle regulated histone gene expression and plays a critical role in promoting cell-cycle progression in the absence of pRB. Two alternatively spliced transcript variants of this gene, which encode distinct isoforms, have been described. Two additional splice variants were reported but detailed nucleotide sequence information is not yet available. [provided by RefSeq]</p>
Other Designations	cyclin Es cyclin Et

Pathway

- [Cell cycle](#)
- [p53 signaling pathway](#)
- [Pathways in cancer](#)
- [Prostate cancer](#)
- [Small cell lung cancer](#)

Disease

- [Adenocarcinoma](#)

- [Breast cancer](#)
- [Breast Neoplasms](#)
- [Disease Progression](#)
- [Esophageal Neoplasms](#)
- [Genetic Predisposition to Disease](#)
- [Neoplasm Invasiveness](#)
- [Neoplasms](#)
- [Ovarian cancer](#)
- [Ovarian Neoplasms](#)
- [Urinary Bladder Neoplasms](#)