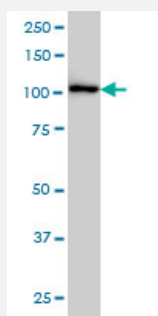


CBL monoclonal antibody (M01), clone 6D12

Catalog # H00000867-M01

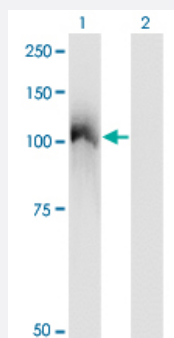
Size 100 ug

Applications



Western Blot (Cell lysate)

CBL monoclonal antibody (M01), clone 6D12 Western Blot analysis of CBL expression in K-562 (Cat # L009V1).

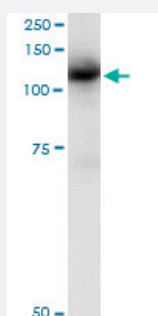


Western Blot (Transfected lysate)

Western Blot analysis of CBL expression in transfected 293T cell line by CBL monoclonal antibody (M01), clone 6D12.

Lane 1: CBL transfected lysate (Predicted MW: 99.6 KDa).

Lane 2: Non-transfected lysate.

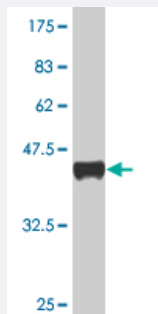
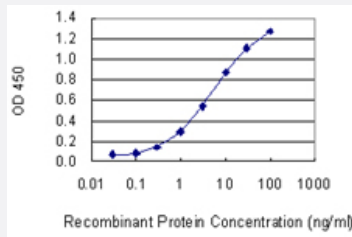


Immunoprecipitation

Immunoprecipitation of CBL transfected lysate using anti-CBL monoclonal antibody and Protein A Magnetic Bead, and immunoblotted with CBL monoclonal antibody.

Sandwich ELISA (Recombinant protein)

Detection limit for recombinant GST tagged CBL is 0.1 ng/ml as a capture antibody.



Western Blot detection against Immunogen (36.74 KDa) .

Specification

Product Description	Mouse monoclonal antibody raised against a partial recombinant CBL.
Immunogen	CBL (NP_005179, 736 a.a. ~ 835 a.a) partial recombinant protein with GST tag. MW of the GST tag alone is 26 KDa.
Sequence	NIQSQAPSITESSTFGEGNLA AAHANTGPEESENEDDGYDVPKPPVPAVLARRTLSDISNASSSF GWLSLDGDPTTNVTEGSQVPERPPKPFPRRINSER
Host	Mouse
Reactivity	Human
Isotype	IgG1 Kappa
Quality Control Testing	Antibody Reactive Against Recombinant Protein. Western Blot detection against Immunogen (36.74 KDa) .
Storage Buffer	In 1x PBS, pH 7.4
Storage Instruction	Store at -20°C or lower. Aliquot to avoid repeated freezing and thawing.

Applications

- Western Blot (Cell lysate)

CBL monoclonal antibody (M01), clone 6D12 Western Blot analysis of CBL expression in K-562 (Cat # L009V1).

[Protocol Download](#)

- Western Blot (Transfected lysate)

Western Blot analysis of CBL expression in transfected 293T cell line by CBL monoclonal antibody (M01), clone 6D12.

Lane 1: CBL transfected lysate (Predicted MW: 99.6 KDa).

Lane 2: Non-transfected lysate.

[Protocol Download](#)

- Western Blot (Recombinant protein)

[Protocol Download](#)

- Immunoprecipitation

Immunoprecipitation of CBL transfected lysate using anti-CBL monoclonal antibody and Protein A Magnetic Bead, and immunoblotted with CBL monoclonal antibody.

[Protocol Download](#)

- Sandwich ELISA (Recombinant protein)

Detection limit for recombinant GST tagged CBL is 0.1 ng/ml as a capture antibody.

[Protocol Download](#)

- ELISA

Gene Info — CBL

Entrez GeneID

[867](#)

GeneBank Accession#

[NM_005188](#)

Protein Accession#

[NP_005179](#)

Gene Name

CBL

Gene Alias

C-CBL, CBL2, RNF55

Gene Description

Cas-Br-M (murine) ecotropic retroviral transforming sequence

Omim ID

[165360](#)

Gene Ontology

[Hyperlink](#)

Gene Summary

The cbl oncogene was first identified as part of a transforming retrovirus which induces mouse pre-B and pro-B cell lymphomas. As an adaptor protein for receptor protein-tyrosine kinases, it positively regulates receptor protein-tyrosine kinase ubiquitination in a manner dependent upon its variant SH2 and RING finger domains. Ubiquitination of receptor protein-tyrosine kinases terminates signaling by marking active receptors for degradation. [provided by RefSeq]

Other Designations

oncogene CBL2

Pathway

- [Chronic myeloid leukemia](#)
- [Endocytosis](#)
- [ErbB signaling pathway](#)
- [Insulin signaling pathway](#)
- [Jak-STAT signaling pathway](#)
- [Pathways in cancer](#)
- [T cell receptor signaling pathway](#)
- [Ubiquitin mediated proteolysis](#)

Disease

- [Diabetes Mellitus](#)
- [Disease Progression](#)
- [Genetic Predisposition to Disease](#)
- [Leukemia](#)
- [Tobacco Use Disorder](#)