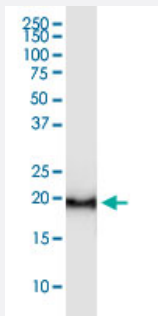


CAPS (Human) IP-WB Antibody Pair

Catalog # H00000828-PW2

Size 1 Set

Applications



Immunoprecipitation of CAPS transfected lysate using rabbit polyclonal anti-CAPS and Protein A Magnetic Bead ([U0007](#)), and immunoblotted with mouse monoclonal anti-CAPS.

Specification

| | |
|--------------------------------|--|
| Product Description | This IP-WB antibody pair set comes with one antibody for immunoprecipitation and another to detect the precipitated protein in western blot. |
| Reactivity | Human |
| Quality Control Testing | Immunoprecipitation-Western Blot (IP-WB) Immunoprecipitation of CAPS transfected lysate using rabbit polyclonal anti-CAPS and Protein A Magnetic Bead (U0007), and immunoblotted with mouse monoclonal anti-CAPS. |
| Supplied Product | Antibody pair set content: 1. Antibody pair for IP: rabbit polyclonal anti-CAPS (300 ul) 2. Antibody pair for WB: mouse monoclonal anti-CAPS (50 ug) |
| Storage Instruction | Store reagents of the antibody pair set at -20°C or lower. Please aliquot to avoid repeated freeze thaw cycle. Reagents should be returned to -20°C storage immediately after use. |

Applications

- Immunoprecipitation-Western Blot

[Protocol Download](#)

Gene Info — CAPS

| | |
|--------------------|---|
| Entrez GeneID | 828 |
| Gene Name | CAPS |
| Gene Alias | CAPS1, MGC126562 |
| Gene Description | calcyphosine |
| Omim ID | 114212 |
| Gene Ontology | Hyperlink |
| Gene Summary | This gene encodes a calcium-binding protein, which may play a role in the regulation of ion transport. A similar protein was first described as a potentially important regulatory protein in the dog thyroid and was termed as R2D5 antigen in rabbit. Alternative splicing of this gene generates two transcript variants. [provided by RefSeq] |
| Other Designations | calcyphosine 1 thyroid protein p24 |

Disease

- [Anorexia Nervosa](#)
- [Bulimia](#)
- [Genetic Predisposition to Disease](#)