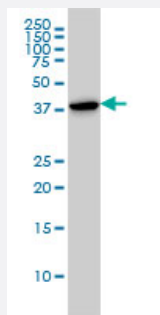


# CAPG monoclonal antibody (M01), clone 1F1

Catalog # H00000822-M01

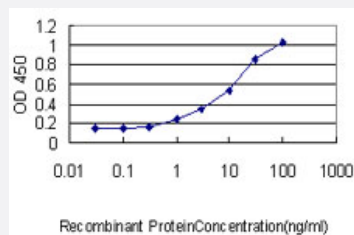
Size 100 ug

## Applications



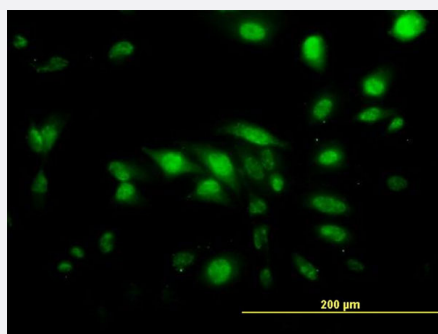
### Western Blot (Cell lysate)

CAPG monoclonal antibody (M01), clone 1F1 Western Blot analysis of CAPG expression in HL-60 ( Cat # L014V1 ).



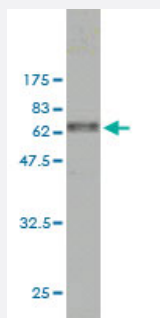
### Sandwich ELISA (Recombinant protein)

Detection limit for recombinant GST tagged CAPG is approximately 0.1ng/ml as a capture antibody.



### Immunofluorescence

Immunofluorescence of monoclonal antibody to CAPG on HeLa cell. [antibody concentration 10 ug/ml]



Western Blot detection against Immunogen (63.8 KDa) .

## Specification

<b>Product Description</b>	Mouse monoclonal antibody raised against a full length recombinant CAPG.
<b>Immunogen</b>	CAPG (AAH00728.1, 1 a.a. ~ 348 a.a) full-length recombinant protein with GST tag. MW of the GST tag alone is 26 KDa.
<b>Sequence</b>	MYTAIPQSGSPFPQSVQDPGLHVWRVEKLKPVPVAQENQGVFFSGDSYLVLHNGPEEVSHLHL WIGQQSSRDEQGACAVLAVHLNTLLGERPVQHREVQGNESDLFMSYFPRGLKYQEGGVESAFH KTSTGAPAAIKKLYQVKGKKNIRATERALNWD SFNTGDCFILD LGQNIFAWCGGKSNILERNKARD LALAIRDSERQGAQVEITDGEPAEMIQVLGPKPALKEGNPEEDLTADKANAAAAALYKVSDA TGQMNLTKVADSSPFALELLISDDCFVLDNGLCGKIYWKGRKANERQAALQVAEGFISRMQYA PNTQVEILPQGRESPIFKQFFKDWK
<b>Host</b>	Mouse
<b>Reactivity</b>	Human
<b>Interspecies Antigen Sequence</b>	Mouse (93); Rat (93)
<b>Isotype</b>	IgG1 kappa
<b>Quality Control Testing</b>	Antibody Reactive Against Recombinant Protein. Western Blot detection against Immunogen (63.8 KDa) .
<b>Storage Buffer</b>	In 1x PBS, pH 7.4
<b>Storage Instruction</b>	Store at -20°C or lower. Aliquot to avoid repeated freezing and thawing.

## Applications

- Western Blot (Cell lysate)

CAPG monoclonal antibody (M01), clone 1F1 Western Blot analysis of CAPG expression in HL-60 ( Cat # L014V1 ).

[Protocol Download](#)

- Western Blot (Recombinant protein)

[Protocol Download](#)

- Sandwich ELISA (Recombinant protein)

Detection limit for recombinant GST tagged CAPG is approximately 0.1ng/ml as a capture antibody.

[Protocol Download](#)

- ELISA

- Immunofluorescence

Immunofluorescence of monoclonal antibody to CAPG on HeLa cell. [antibody concentration 10 ug/ml]

## Gene Info — CAPG

Entrez GeneID [822](#)

GeneBank Accession# [BC000728](#)

Protein Accession# [AAH00728.1](#)

Gene Name CAPG

Gene Alias AFCP, MCP

Gene Description capping protein (actin filament), gelsolin-like

Omim ID [153615](#)

Gene Ontology [Hyperlink](#)

**Gene Summary** This gene encodes a member of the gelsolin/villin family of actin-regulatory proteins. The encoded protein reversibly blocks the barbed ends of F-actin filaments in a Ca<sup>2+</sup> and phosphoinositide-regulated manner, but does not sever preformed actin filaments. By capping the barbed ends of actin filaments, the encoded protein contributes to the control of actin-based motility in non-muscle cells. Alternatively spliced transcript variants have been observed, but have not been fully described. [provided by RefSeq]

**Other Designations** actin-regulatory protein CAP-G[gelsolin-like capping protein]macrophage capping protein

## Disease

- [Atherosclerosis](#)

- [Carotid Artery Diseases](#)
- [Disease Progression](#)
- [Genetic Predisposition to Disease](#)
- [Hyperlipoproteinemia Type II](#)