

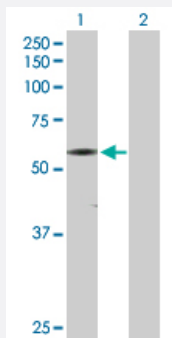
MaxPab®

## CAMK2G purified MaxPab rabbit polyclonal antibody (D01P)

Catalog # H00000818-D01P

Size 100 ug

### Applications

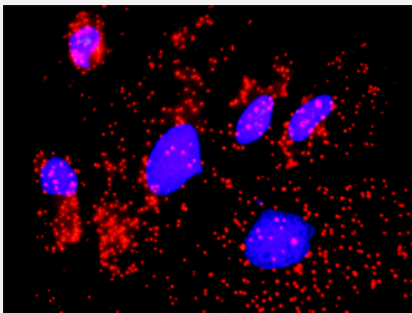


#### Western Blot (Transfected lysate)

Western Blot analysis of CAMK2G expression in transfected 293T cell line ([H00000818-T02](#)) by CAMK2G MaxPab polyclonal antibody.

Lane 1: CAMK2G transfected lysate(59.00 KDa).

Lane 2: Non-transfected lysate.



#### In situ Proximity Ligation Assay (Cell)

Proximity Ligation Analysis of protein-protein interactions between CAMK2G and FLNA. HeLa cells were stained with anti-CAMK2G rabbit purified polyclonal 1:1200 and anti-FLNA mouse monoclonal antibody 1:50. Each red dot represents the detection of protein-protein interaction complex, and nuclei were counterstained with DAPI (blue).

### Specification

#### Product Description

Rabbit polyclonal antibody raised against a full-length human CAMK2G protein.

#### Immunogen

CAMK2G (AAH34044.1, 1 a.a. ~ 527 a.a) full-length human protein.

#### Sequence

MATTATCTRFTDDYQLFEELGKGAFSVVRRVCVKKTPQTQEYAAKIINTKKLSARDHQKLREARICR  
LLKHPNIVRLHDSISEEGFHYLVFDLVTGGELFEDIVAREYYSEADASHCIHQILESVNHHQHDIHR  
DLKPENLLLASKCKGA AVKLADFG LAIEVQGEQQAWFGFAGTPGYLSPEVLRKDPYGKPVDIWA  
CGVILYILLVGYPFWDEDQHKL YQQIKAGAYDFPSPEWDTVTPEAKNLINQMLTINPAKRITADQAL  
KHPWVCQRSTVASMMHRQETVECLRKFNARRKLKGAILTTLVSRNFSVGRQSSAPASPAASA  
AGLAGQAAKSLNKKSDGGVKKRKSSSVHLMEPQTTVVHNATDGIKGSTESCNTTTEDEDLKV  
RKQEIIKITEQLIEAINNGDFEAYTKICDPGLTSFEPEALGNLVEGMDFHKFYFENLLSKNSKPIHTTIL  
NPHVHVIGEDAACIAYIRLTQYIDGQGRPRTSQSEETRVVHRRDGKWLNVHYHCSGAPAAPLQ

Host	Rabbit
Reactivity	Human
Interspecies Antigen Sequence	Mouse (92); Rat (99)
Quality Control Testing	Antibody reactive against mammalian transfected lysate.
Storage Buffer	In 1x PBS, pH 7.4
Storage Instruction	Store at -20°C or lower. Aliquot to avoid repeated freezing and thawing.

## Applications

- Western Blot (Transfected lysate)

Western Blot analysis of CAMK2G expression in transfected 293T cell line ([H00000818-T02](#)) by CAMK2G MaxPab polyclonal antibody.

Lane 1: CAMK2G transfected lysate(59.00 KDa).

Lane 2: Non-transfected lysate.

[Protocol Download](#)

- In situ* Proximity Ligation Assay (Cell)

Proximity Ligation Analysis of protein-protein interactions between CAMK2G and FLNA. HeLa cells were stained with anti-CAMK2G rabbit purified polyclonal 1:1200 and anti-FLNA mouse monoclonal antibody 1:50. Each red dot represents the detection of protein-protein interaction complex, and nuclei were counterstained with DAPI (blue).

## Gene Info — CAMK2G

Entrez GeneID	<a href="#">818</a>
GeneBank Accession#	<a href="#">BC034044.1</a>
Protein Accession#	<a href="#">AAH34044.1</a>
Gene Name	CAMK2G
Gene Alias	CAMK, CAMK-II, CAMKG, FLJ16043, MGC26678
Gene Description	calcium/calmodulin-dependent protein kinase II gamma
Omim ID	<a href="#">602123</a>
Gene Ontology	<a href="#">Hyperlink</a>

**Gene Summary**

The product of this gene belongs to the Serine/Threonine protein kinase family, and to the Ca(2+)/calmodulin-dependent protein kinase subfamily. Calcium signaling is crucial for several aspects of plasticity at glutamatergic synapses. In mammalian cells the enzyme is composed of four different chains: alpha, beta, gamma, and delta. The product of this gene is a gamma chain. Six alternatively spliced variants that encode six different isoforms have been characterized to date. Additional alternative splice variants that encode different isoforms have been described, but their full-length nature has not been determined. [provided by RefSeq]

**Other Designations**

CaM kinase II|OTTHUMP00000019843|OTTHUMP00000019844|calcium/calmodulin-dependent protein kinase (CaM kinase) II gamma

**Pathway**

- [Calcium signaling pathway](#)
- [ErbB signaling pathway](#)
- [Glioma](#)
- [GnRH signaling pathway](#)
- [Long-term potentiation](#)
- [Melanogenesis](#)
- [Neurotrophin signaling pathway](#)
- [Olfactory transduction](#)
- [Wnt signaling pathway](#)

**Disease**

- [Alzheimer disease](#)
- [Cardiovascular Diseases](#)
- [Cerebral Amyloid Angiopathy](#)
- [Diabetes Mellitus](#)
- [Edema](#)
- [Genetic Predisposition to Disease](#)
- [Neuroblastoma](#)