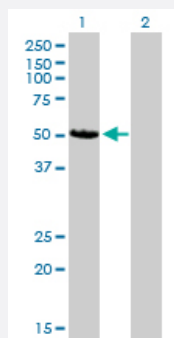


# CAMK2D monoclonal antibody (M02), clone 1A8

Catalog # H00000817-M02

Size 100 ug

## Applications

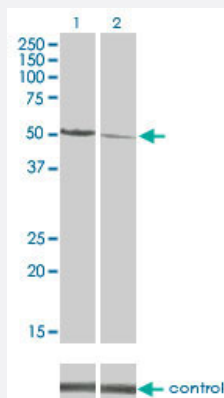


### Western Blot (Transfected lysate)

Western Blot analysis of CAMK2D expression in transfected 293T cell line by CAMK2D monoclonal antibody (M02), clone 1A8.

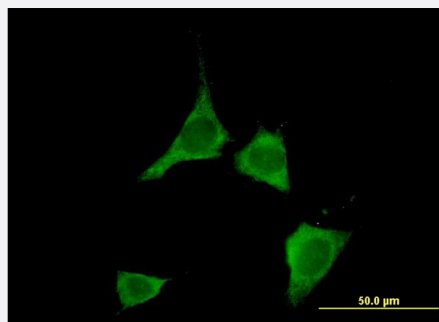
Lane 1: CAMK2D transfected lysate(54.1 kDa).

Lane 2: Non-transfected lysate.



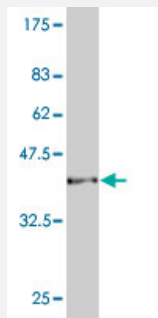
### RNAi Knockdown (Antibody validated)

Western blot analysis of CAMK2D over-expressed 293 cell line, cotransfected with CAMK2D Validated Chimera RNAi ( Cat # H00000817-R01V ) (Lane 2) or non-transfected control (Lane 1). Blot probed with CAMK2D monoclonal antibody (M02) clone 1A8 (Cat # H00000817-M02 ). GAPDH ( 36.1 kDa ) used as specificity and loading control.



### Immunofluorescence

Immunofluorescence of monoclonal antibody to CAMK2D on NIH/3T3 cell.  
[antibody concentration 10 ug/ml]



Western Blot detection against Immunogen (37.73 KDa) .

## Specification

<b>Product Description</b>	Mouse monoclonal antibody raised against a partial recombinant CAMK2D.
<b>Immunogen</b>	CAMK2D (AAH32784, 301 a.a. ~ 410 a.a) partial recombinant protein with GST tag. MW of the GST tag alone is 26 KDa.
<b>Sequence</b>	KGAILTTMLATRNFSAAKSLKKPDGVKESTESSNTTIEDVDKARKQEIIKVTEQLIEAINNGDFFA YTKICDPGLTAFEPEALGNLVEGMDFHRFYFENALSKSNKPI
<b>Host</b>	Mouse
<b>Reactivity</b>	Human, Mouse
<b>Isotype</b>	IgG2b Lambda
<b>Quality Control Testing</b>	Antibody Reactive Against Recombinant Protein. Western Blot detection against Immunogen (37.73 KDa) .
<b>Storage Buffer</b>	In 1x PBS, pH 7.4
<b>Storage Instruction</b>	Store at -20°C or lower. Aliquot to avoid repeated freezing and thawing.

## Applications

- Western Blot (Transfected lysate)

Western Blot analysis of CAMK2D expression in transfected 293T cell line by CAMK2D monoclonal antibody (M02), clone 1A8.

Lane 1: CAMK2D transfected lysate(54.1 KDa).

Lane 2: Non-transfected lysate.

[Protocol Download](#)

- Western Blot (Recombinant protein)

[Protocol Download](#)

- ELISA

- RNAi Knockdown (Antibody validated)

Western blot analysis of CAMK2D over-expressed 293 cell line, cotransfected with CAMK2D Validated Chimera RNAi ( Cat # H00000817-R01V ) (Lane 2) or non-transfected control (Lane 1). Blot probed with CAMK2D monoclonal antibody (M02) clone 1A8 (Cat # H00000817-M02 ). GAPDH ( 36.1 kDa ) used as specificity and loading control.

[Protocol Download](#)

- Immunofluorescence

Immunofluorescence of monoclonal antibody to CAMK2D on NIH/3T3 cell. [antibody concentration 10 ug/ml]

## Gene Info — CAMK2D

Entrez GeneID [817](#)

GeneBank Accession# [BC032784](#)

Protein Accession# [AAH32784](#)

Gene Name CAMK2D

Gene Alias CAMKD, DKFZp686G23119, DKFZp686I2288, MGC44911

Gene Description calcium/calmodulin-dependent protein kinase II delta

Omim ID [607708](#)

Gene Ontology [Hyperlink](#)

**Gene Summary** The product of this gene belongs to the serine/threonine protein kinase family and to the Ca(2+)/calmodulin-dependent protein kinase subfamily. Calcium signaling is crucial for several aspects of plasticity at glutamatergic synapses. In mammalian cells, the enzyme is composed of four different chains: alpha, beta, gamma, and delta. The product of this gene is a delta chain. Alternative splicing results in multiple transcript variants encoding distinct isoforms. Distinct isoforms of this chain have different expression patterns

**Other Designations** CaM kinase II delta subunit|CaM-kinase II delta chain|CaMK-II delta subunit|OTTHUMP00000163829|OTTHUMP00000163830|calcium/calmodulin-dependent protein kinase (CaM kinase) II delta|calcium/calmodulin-dependent protein kinase type II delta chain

## Pathway

- [Calcium signaling pathway](#)

- [ErbB signaling pathway](#)
- [Glioma](#)
- [GnRH signaling pathway](#)
- [Long-term potentiation](#)
- [Melanogenesis](#)
- [Neurotrophin signaling pathway](#)
- [Olfactory transduction](#)
- [Wnt signaling pathway](#)

## Disease

- [Alcoholism](#)
- [Genetic Predisposition to Disease](#)
- [Mucocutaneous Lymph Node Syndrome](#)
- [Tobacco Use Disorder](#)