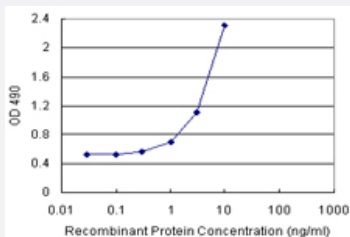


CALML3 (Human) Matched Antibody Pair

Catalog # H00000810-AP11

Size 1 Set

Applications



Sandwich ELISA detection sensitivity ranging from 0.3 ng/ml to 100 ng/ml.

Specification

Product Description	This antibody pair set comes with a matched antibody pair to detect and quantify the protein level of human CALML3.
Reactivity	Human
Quality Control Testing	Standard curve using recombinant protein (H00000810-P01) as an analyte. Sandwich ELISA detection sensitivity ranging from 0.3 ng/ml to 100 ng/ml.
Supplied Product	Antibody pair set content: 1. Capture antibody: rabbit MaxPab® affinity purified polyclonal anti-CALML3 (100 ug) 2. Detection antibody: mouse monoclonal anti-CALML3, IgG2b Kappa (20 ug) *Reagents are sufficient for at least 1-2 x 96 well plates using recommended protocols.
Storage Instruction	Store reagents of the antibody pair set at -20°C or lower. Please aliquot to avoid repeated freeze thaw cycle. Reagents should be returned to -20°C storage immediately after use.

Applications

- ELISA Pair (Recombinant protein)

[Protocol Download](#)

Gene Info — CALML3

Entrez GeneID	810
Gene Name	CALML3
Gene Alias	CLP
Gene Description	calmodulin-like 3
Omim ID	114184
Gene Ontology	Hyperlink
Other Designations	-

Pathway

- [Calcium signaling pathway](#)
- [Glioma](#)
- [GnRH signaling pathway](#)
- [Insulin signaling pathway](#)
- [Long-term potentiation](#)
- [Melanogenesis](#)
- [Neurotrophin signaling pathway](#)
- [Olfactory transduction](#)
- [Phosphatidylinositol signaling system](#)
- [Vascular smooth muscle contraction](#)

Disease

- [Alzheimer Disease](#)
- [Genetic Predisposition to Disease](#)