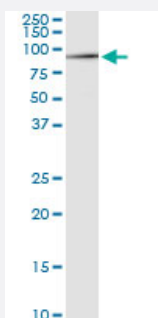


CACNB1 (Human) IP-WB Antibody Pair

Catalog # H00000782-PW1

Size 1 Set

Applications



Immunoprecipitation of CACNB1 transfected lysate using rabbit polyclonal anti-CACNB1 and Protein A Magnetic Bead ([U0007](#)), and immunoblotted with mouse purified polyclonal anti-CACNB1.

Specification

Product Description	This IP-WB antibody pair set comes with one antibody for immunoprecipitation and another to detect the precipitated protein in western blot.
Reactivity	Human
Quality Control Testing	Immunoprecipitation-Western Blot (IP-WB) Immunoprecipitation of CACNB1 transfected lysate using rabbit polyclonal anti-CACNB1 and Protein A Magnetic Bead (U0007), and immunoblotted with mouse purified polyclonal anti-CACNB1.
Supplied Product	Antibody pair set content: 1. Antibody pair for IP: rabbit polyclonal anti-CACNB1 (300 ul) 2. Antibody pair for WB: mouse purified polyclonal anti-CACNB1 (50 ug)
Storage Instruction	Store reagents of the antibody pair set at -20°C or lower. Please aliquot to avoid repeated freeze thaw cycle. Reagents should be returned to -20°C storage immediately after use.

Applications

- Immunoprecipitation-Western Blot

[Protocol Download](#)

Gene Info — CACNB1

Entrez GeneID	782
Gene Name	CACNB1
Gene Alias	CAB1, CACNLB1, CCHLB1, MGC41896
Gene Description	calcium channel, voltage-dependent, beta 1 subunit
Omim ID	114207
Gene Ontology	Hyperlink
Gene Summary	The protein encoded by this gene belongs to the calcium channel beta subunit family. It plays an important role in the calcium channel by modulating G protein inhibition, increasing peak calcium current, controlling the alpha-1 subunit membrane targeting and shifting the voltage dependence of activation and inactivation. Alternative splicing occurs at this locus and three transcript variants encoding three distinct isoforms have been identified. [provided by RefSeq]
Other Designations	OTTHUMP00000164286 calcium channel, L type, beta 1 polypeptide dihydropyridine-sensitive L-type, calcium channel beta-1 subunit

Pathway

- [Arrhythmogenic right ventricular cardiomyopathy \(ARVC\)](#)
- [Cardiac muscle contraction](#)
- [Hypertrophic cardiomyopathy \(HCM\)](#)
- [MAPK signaling pathway](#)