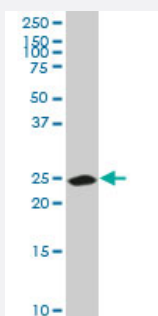


CA1 monoclonal antibody (M05), clone M1

Catalog # H00000759-M05

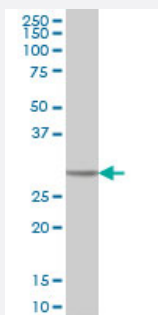
Size 100 ug

Applications



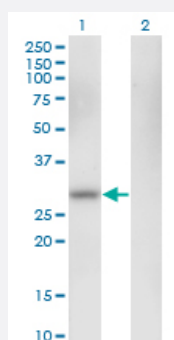
Western Blot (Tissue lysate)

CA1 monoclonal antibody (M05), clone M1. Western Blot analysis of CA1 expression in human spleen.



Western Blot (Cell lysate)

CA1 monoclonal antibody (M05), clone M1 Western Blot analysis of CA1 expression in HeLa (Cat # L013V1).

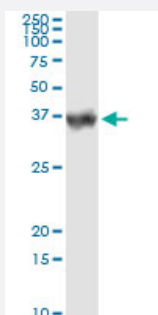


Western Blot (Transfected lysate)

Western Blot analysis of CA1 expression in transfected 293T cell line by CA1 monoclonal antibody (M05), clone M1.

Lane 1: CA1 transfected lysate(28.9 KDa).

Lane 2: Non-transfected lysate.

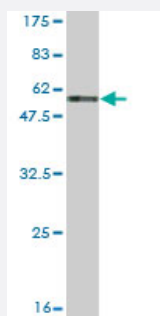
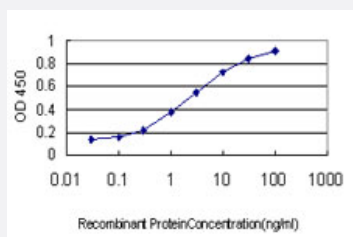


Immunoprecipitation

Immunoprecipitation of CA1 transfected lysate using anti-CA1 monoclonal antibody and Protein A Magnetic Bead, and immunoblotted with CA1 MaxPab rabbit polyclonal antibody.

Sandwich ELISA (Recombinant protein)

Detection limit for recombinant GST tagged CA1 is approximately 0.03ng/ml as a capture antibody.



Western Blot detection against Immunogen (54.45 KDa) .

Specification

Product Description	Mouse monoclonal antibody raised against a full length recombinant CA1.
Immunogen	CA1 (AAH27890, 1 a.a. ~ 261 a.a) full-length recombinant protein with GST tag. MW of the GST tag alone is 26 KDa.
Sequence	MASPDWGYDDKNGPEQWSKLYPIANGNNQSPVDIKTSETKHDTSLKPISVSYNPATAKEIINVGHSHVNFEDNDNRSVLKGGPFSDSYRLFQFHFWGSTNEHGSEHTVDGVKYSAELHVAHWNSAKYSSLAEEAASKADGLAVIGVLMKVGEANPKLQKVLDAALQAIKTKGKRAPFTNFDPSLLPSSLDFTWYPGSLTHPPLYESVTWICKESISVSSEQLAQFRSLLSNVEGDNAVPMQHNNRPTQPLKGRTVRASF
Host	Mouse
Reactivity	Human
Interspecies Antigen Sequence	Mouse (78); Rat (81)
Isotype	IgG2a Kappa
Quality Control Testing	Antibody Reactive Against Recombinant Protein. Western Blot detection against Immunogen (54.45 KDa) .
Storage Buffer	In 1x PBS, pH 7.4
Storage Instruction	Store at -20°C or lower. Aliquot to avoid repeated freezing and thawing.

Applications

- Western Blot (Tissue lysate)

CA1 monoclonal antibody (M05), clone M1. Western Blot analysis of CA1 expression in human spleen.

[Protocol Download](#)

- Western Blot (Cell lysate)

CA1 monoclonal antibody (M05), clone M1 Western Blot analysis of CA1 expression in HeLa (Cat # L013V1).

[Protocol Download](#)

- Western Blot (Transfected lysate)

Western Blot analysis of CA1 expression in transfected 293T cell line by CA1 monoclonal antibody (M05), clone M1.

Lane 1: CA1 transfected lysate(28.9 KDa).

Lane 2: Non-transfected lysate.

[Protocol Download](#)

- Western Blot (Recombinant protein)

[Protocol Download](#)

- Immunoprecipitation

Immunoprecipitation of CA1 transfected lysate using anti-CA1 monoclonal antibody and Protein A Magnetic Bead, and immunoblotted with CA1 MaxPab rabbit polyclonal antibody.

[Protocol Download](#)

- Sandwich ELISA (Recombinant protein)

Detection limit for recombinant GST tagged CA1 is approximately 0.03ng/ml as a capture antibody.

[Protocol Download](#)

- ELISA

Gene Info — CA1

Entrez GeneID [759](#)

GeneBank Accession# [BC027890](#)

Protein Accession#	AAH27890
Gene Name	CA1
Gene Alias	Car1
Gene Description	carbonic anhydrase I
Omim ID	114800
Gene Ontology	Hyperlink
Gene Summary	<p>Carbonic anhydrases (CAs) are a large family of zinc metalloenzymes that catalyze the reversible hydration of carbon dioxide. They participate in a variety of biological processes, including respiration, calcification, acid-base balance, bone resorption, and the formation of aqueous humor, cerebrospinal fluid, saliva, and gastric acid. They show extensive diversity in tissue distribution and in their subcellular localization. CA1 is closely linked to CA2 and CA3 genes on chromosome 8, and it encodes a cytosolic protein which is found at the highest level in erythrocytes. Variants of this gene have been described in some populations. Multiple alternatively spliced variants, encoding the same protein, have been identified. Transcript variants of CA1 utilizing alternative polyA_sites have been described in literature. [provided by RefSeq]</p>
Other Designations	carbonic dehydratase

Pathway

- [Nitrogen metabolism](#)

Disease

- [Diabetic Retinopathy](#)