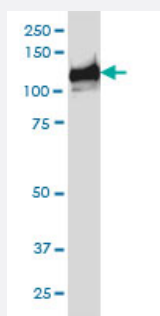


BUB1B monoclonal antibody (M02), clone 2G5

Catalog # H00000701-M02

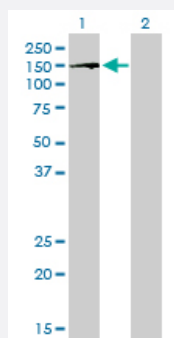
Size 100 ug

Applications



Western Blot (Cell lysate)

BUB1B monoclonal antibody (M02), clone 2G5 Western Blot analysis of BUB1B expression in HeLa S3 NE (Cat # L013V3).

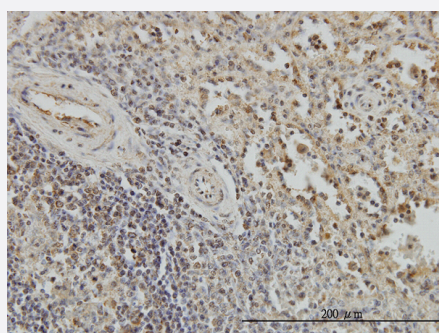


Western Blot (Transfected lysate)

Western Blot analysis of BUB1B expression in transfected 293T cell line by BUB1B monoclonal antibody (M02), clone 2G5.

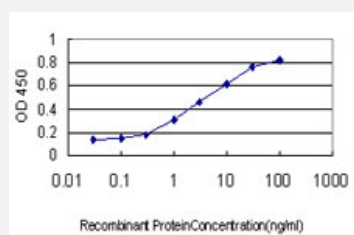
Lane 1: BUB1B transfected lysate(119.5 KDa).

Lane 2: Non-transfected lysate.



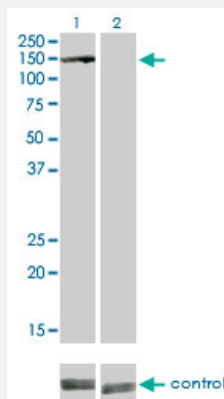
Immunohistochemistry (Formalin/PFA-fixed paraffin-embedded sections)

Immunoperoxidase of monoclonal antibody to BUB1B on formalin-fixed paraffin-embedded human spleen. [antibody concentration 3 ug/ml]



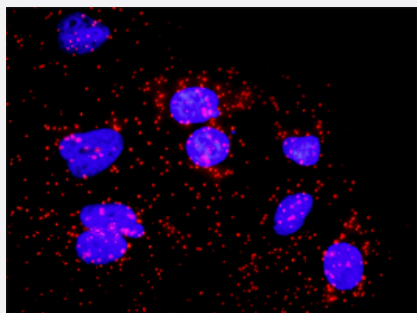
Sandwich ELISA (Recombinant protein)

Detection limit for recombinant GST tagged BUB1B is approximately 0.03ng/ml as a capture antibody.



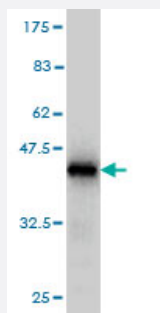
RNAi Knockdown (Antibody validated)

Western blot analysis of BUB1B over-expressed 293 cell line, cotransfected with BUB1B Validated Chimera RNAi (Cat # H00000701-R01V) (Lane 2) or non-transfected control (Lane 1). Blot probed with BUB1B monoclonal antibody (M02) clone 2G5 (Cat # H00000701-M02). GAPDH (36.1 kDa) used as specificity and loading control.



In situ Proximity Ligation Assay (Cell)

Proximity Ligation Analysis of protein-protein interactions between CDC20 and BUB1B. HeLa cells were stained with anti-CDC20 rabbit purified polyclonal 1:1200 and anti-BUB1B mouse monoclonal antibody 1:50. Each red dot represents the detection of protein-protein interaction complex, and nuclei were counterstained with DAPI (blue).



Western Blot detection against Immunogen (39.93 KDa) .

Specification

Product Description

Mouse monoclonal antibody raised against a partial recombinant BUB1B.

Immunogen

BUB1B (AAH18739, 1 a.a. ~ 130 a.a) partial recombinant protein with GST tag. MW of the GST tag alone is 26 KDa.

Sequence

MAAVKKEGGALSEAMSLEGDEWELSKENVQPLRQGRIMSTLQGALAQESACNNTLQQQKRAFE
YEIRFYTGNDPLDVWDRIYSWTEQNYPPGGKESNMSTLLERAVEALQGEKRYSDPRFLNLWLKL
GR

Host

Mouse

Reactivity

Human

Interspecies Antigen Sequence	Mouse (82)
Isotype	IgG1 Kappa
Quality Control Testing	Antibody Reactive Against Recombinant Protein. Western Blot detection against Immunogen (39.93 KDa) .
Storage Buffer	In 1x PBS, pH 7.4
Storage Instruction	Store at -20°C or lower. Aliquot to avoid repeated freezing and thawing.

Applications

- Western Blot (Cell lysate)

BUB1B monoclonal antibody (M02), clone 2G5 Western Blot analysis of BUB1B expression in Hela S3 NE (Cat # L013V3).

[Protocol Download](#)

- Western Blot (Transfected lysate)

Western Blot analysis of BUB1B expression in transfected 293T cell line by BUB1B monoclonal antibody (M02), clone 2G5.

Lane 1: BUB1B transfected lysate(119.5 KDa).

Lane 2: Non-transfected lysate.

[Protocol Download](#)

- Western Blot (Recombinant protein)

[Protocol Download](#)

- Immunohistochemistry (Formalin/PFA-fixed paraffin-embedded sections)

Immunoperoxidase of monoclonal antibody to BUB1B on formalin-fixed paraffin-embedded human spleen. [antibody concentration 3 ug/ml]

[Protocol Download](#)

- Sandwich ELISA (Recombinant protein)

Detection limit for recombinant GST tagged BUB1B is approximately 0.03ng/ml as a capture antibody.

[Protocol Download](#)

- ELISA

- RNAi Knockdown (Antibody validated)

Western blot analysis of BUB1B over-expressed 293 cell line, cotransfected with BUB1B Validated Chimera RNAi (Cat # H00000701-R01V) (Lane 2) or non-transfected control (Lane 1). Blot probed with BUB1B monoclonal antibody (M02) clone 2G5 (Cat # H00000701-M02). GAPDH (36.1 kDa) used as specificity and loading control.

[Protocol Download](#)

- *In situ* Proximity Ligation Assay (Cell)

Proximity Ligation Analysis of protein-protein interactions between CDC20 and BUB1B. HeLa cells were stained with anti-CDC20 rabbit purified polyclonal 1:1200 and anti-BUB1B mouse monoclonal antibody 1:50. Each red dot represents the detection of protein-protein interaction complex, and nuclei were counterstained with DAPI (blue).

Gene Info — BUB1B

Entrez GeneID [701](#)

GeneBank Accession# [BC018739](#)

Protein Accession# [AAH18739](#)

Gene Name BUB1B

Gene Alias BUB1beta, BUBR1, Bub1A, MAD3L, SSK1, hBUBR1

Gene Description budding uninhibited by benzimidazoles 1 homolog beta (yeast)

Omim ID [114500 602860](#)

Gene Ontology [Hyperlink](#)

Gene Summary This gene encodes a kinase involved in spindle checkpoint function. The protein has been localized to the kinetochore and plays a role in the inhibition of the anaphase-promoting complex/cyclosome (APC/C), delaying the onset of anaphase and ensuring proper chromosome segregation. Impaired spindle checkpoint function has been found in many forms of cancer. [provided by RefSeq]

Other Designations BUB1 budding uninhibited by benzimidazoles 1 homolog beta|MAD3/BUB1-related protein kinase|budding uninhibited by benzimidazoles 1, beta

Publication Reference

- [Prognostic implications of securin expression and sub-cellular localization in human breast cancer.](#)

Gurvits N, Repo H, Loytyniemi E, Nykanen M, Anttinen J, Kuopio T, Talvinen K, Kronqvist P.

Cellular Oncology (Dordrecht) 2016 Mar; 39(4):319.

Application: IHC, IF, Human, Benign breast epithelium and in invasive breast carcinomas

Pathway

- [Cell cycle](#)

Disease

- [Adenocarcinoma](#)
- [Breast cancer](#)
- [Breast Neoplasms](#)
- [Carcinoma](#)
- [Esophageal Neoplasms](#)
- [Genetic Predisposition to Disease](#)
- [Kidney Failure](#)
- [Lung Neoplasms](#)
- [Pulmonary Disease](#)