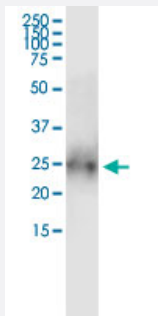


BTC (Human) IP-WB Antibody Pair

Catalog # H00000685-PW2

Size 1 Set

Applications



Immunoprecipitation of BTC transfected lysate using rabbit polyclonal anti-BTC and Protein A Magnetic Bead ([U0007](#)), and immunoblotted with mouse purified polyclonal anti-BTC.

Specification

Product Description	This IP-WB antibody pair set comes with one antibody for immunoprecipitation and another to detect the precipitated protein in western blot.
Reactivity	Human
Quality Control Testing	Immunoprecipitation-Western Blot (IP-WB) Immunoprecipitation of BTC transfected lysate using rabbit polyclonal anti-BTC and Protein A Magnetic Bead (U0007), and immunoblotted with mouse purified polyclonal anti-BTC.
Supplied Product	Antibody pair set content: 1. Antibody pair for IP: rabbit polyclonal anti-BTC (300 ul) 2. Antibody pair for WB: mouse purified polyclonal anti-BTC (50 ug)
Storage Instruction	Store reagents of the antibody pair set at -20°C or lower. Please aliquot to avoid repeated freeze thaw cycle. Reagents should be returned to -20°C storage immediately after use.

Applications

- Immunoprecipitation-Western Blot

[Protocol Download](#)

Gene Info — BTC

Entrez GeneID	685
Gene Name	BTC
Gene Alias	-
Gene Description	betacellulin
Omim ID	600345
Gene Ontology	Hyperlink
Gene Summary	The protein encoded by this gene is a member of the EGF family of growth factors. It is synthesized primarily as a transmembrane precursor, which is then processed to mature molecule by proteolytic events. This protein is a ligand for the EGF receptor. [provided by RefSeq]
Other Designations	OTTHUMP00000160600

Pathway

- [ErbB signaling pathway](#)

Disease

- [Diabetes Mellitus](#)
- [Genetic Predisposition to Disease](#)
- [Obesity](#)