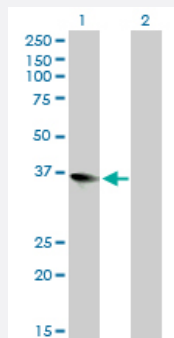


ZFP36L1 monoclonal antibody (M02), clone 1A3

Catalog # H00000677-M02

Size 100 ug

Applications

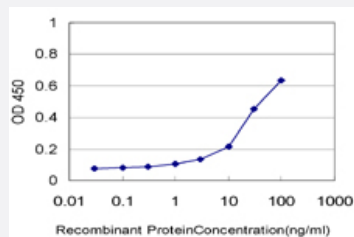


Western Blot (Transfected lysate)

Western Blot analysis of ZFP36L1 expression in transfected 293T cell line by ZFP36L1 monoclonal antibody (M02), clone 1A3.

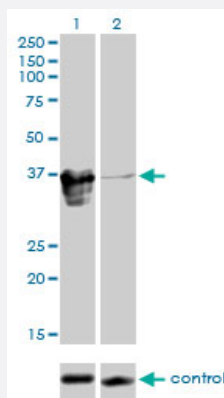
Lane 1: ZFP36L1 transfected lysate (36.3 kDa).

Lane 2: Non-transfected lysate.



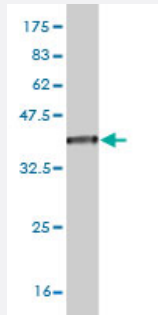
Sandwich ELISA (Recombinant protein)

Detection limit for recombinant GST tagged ZFP36L1 is approximately 1 ng/ml as a capture antibody.



RNAi Knockdown (Antibody validated)

Western blot analysis of ZFP36L1 over-expressed 293 cell line, cotransfected with ZFP36L1 Validated Chimera RNAi (Cat # H00000677-R01V) (Lane 2) or non-transfected control (Lane 1). Blot probed with ZFP36L1 monoclonal antibody (M02), clone 1A3 (Cat # H00000677-M02). GAPDH (36.1 kDa) used as specificity and loading control.



Western Blot detection against Immunogen (37.62 KDa) .

Specification

| | |
|--------------------------------------|--|
| Product Description | Mouse monoclonal antibody raised against a partial recombinant ZFP36L1. |
| Immunogen | ZFP36L1 (NP_004917, 1 a.a. ~ 108 a.a) partial recombinant protein with GST tag. MW of the GST tag alone is 26 KDa. |
| Sequence | MTTTLVSATIFDLSEVLCKGNKMLNYSAPSAGGCLLDRKAVGTPAGGGFPRRHVTLPSKFKHQN QLLSSLKGEPAPALSSRDSRFRDRSFSEGGERLLPTQKQPGGG |
| Host | Mouse |
| Reactivity | Human |
| Interspecies Antigen Sequence | Mouse (97); Rat (97) |
| Isotype | IgG1 Kappa |
| Quality Control Testing | Antibody Reactive Against Recombinant Protein. Western Blot detection against Immunogen (37.62 KDa) . |
| Storage Buffer | In 1x PBS, pH 7.4 |
| Storage Instruction | Store at -20°C or lower. Aliquot to avoid repeated freezing and thawing. |

Applications

● Western Blot (Transfected lysate)

Western Blot analysis of ZFP36L1 expression in transfected 293T cell line by ZFP36L1 monoclonal antibody (M02), clone 1A3.

Lane 1: ZFP36L1 transfected lysate(36.3 KDa).

Lane 2: Non-transfected lysate.

[Protocol Download](#)

- Western Blot (Recombinant protein)

[Protocol Download](#)

- Sandwich ELISA (Recombinant protein)

Detection limit for recombinant GST tagged ZFP36L1 is approximately 1ng/ml as a capture antibody.

[Protocol Download](#)

- ELISA

- RNAi Knockdown (Antibody validated)

Western blot analysis of ZFP36L1 over-expressed 293 cell line, cotransfected with ZFP36L1 Validated Chimera RNAi (Cat # H00000677-R01V) (Lane 2) or non-transfected control (Lane 1). Blot probed with ZFP36L1 monoclonal antibody (M02), clone 1A3 (Cat # H00000677-M02). GAPDH (36.1 kDa) used as specificity and loading control.

[Protocol Download](#)

Gene Info — ZFP36L1

Entrez GeneID [677](#)

GeneBank Accession# [NM_004926](#)

Protein Accession# [NP_004917](#)

Gene Name ZFP36L1

Gene Alias BRF1, Berg36, ERF-1, ERF1, RNF162B, TIS11B, cMG1

Gene Description zinc finger protein 36, C3H type-like 1

Omim ID [601064](#)

Gene Ontology [Hyperlink](#)

Gene Summary This gene is a member of the TIS11 family of early response genes. Family members are induced by various agonists such as the phorbol ester TPA and the polypeptide mitogen EGF. The gene is well conserved across species and has a promoter that contains motifs seen in other early-response genes. The encoded protein contains a distinguishing putative zinc finger domain with a repeating cys-his motif. This putative nuclear transcription factor most likely functions in regulating the response to growth factors. [provided by RefSeq]

Other Designations EGF-response factor 1|butyrate response factor 1|early response factor Berg36|zinc finger protein, C3H type, 36-like 1