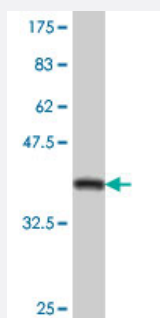


ZFP36L1 polyclonal antibody (A01)

Catalog # H00000677-A01

Size 50 uL

Applications



Western Blot detection against Immunogen (37.99 KDa) .

Specification

Product Description	Mouse polyclonal antibody raised against a partial recombinant ZFP36L1.
Immunogen	ZFP36L1 (NP_004917, 1 a.a. ~ 108 a.a) partial recombinant protein with GST tag.
Sequence	MTTTLVSATIFDLSEVLCKGNKMLNYSAPSAGGCLDRKAVGTPAGGGFPRRHSTLPSSKFHQN QLLSSLKGEPAPALSSRDSRFRDRSFSEGGERLLPTQKQPGGG
Host	Mouse
Reactivity	Human
Interspecies Antigen Sequence	Mouse (97); Rat (97)
Quality Control Testing	Antibody Reactive Against Recombinant Protein. Western Blot detection against Immunogen (37.99 KDa) .
Storage Buffer	50 % glycerol
Storage Instruction	Store at -20°C or lower. Aliquot to avoid repeated freezing and thawing.

Applications

- Western Blot (Recombinant protein)

[Protocol Download](#)

- ELISA

Gene Info — ZFP36L1

Entrez GeneID [677](#)

GeneBank Accession# [NM_004926](#)

Protein Accession# [NP_004917](#)

Gene Name ZFP36L1

Gene Alias BRF1, Berg36, ERF-1, ERF1, RNF162B, TIS11B, cMG1

Gene Description zinc finger protein 36, C3H type-like 1

Omim ID [601064](#)

Gene Ontology [Hyperlink](#)

Gene Summary This gene is a member of the TIS11 family of early response genes. Family members are induced by various agonists such as the phorbol ester TPA and the polypeptide mitogen EGF. The gene is well conserved across species and has a promoter that contains motifs seen in other early-response genes. The encoded protein contains a distinguishing putative zinc finger domain with a repeating cys-his motif. This putative nuclear transcription factor most likely functions in regulating the response to growth factors. [provided by RefSeq]

Other Designations EGF-response factor 1|butyrate response factor 1|early response factor Berg36|zinc finger protein, C3H type, 36-like 1