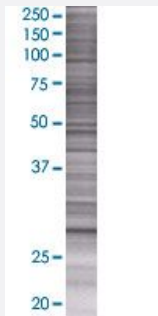


# BPHL 293T Cell Transient Overexpression Lysate(Denatured)

Catalog # H00000670-T01

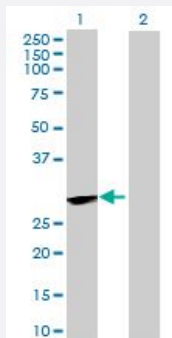
Size 100 uL

## Applications



### SDS-PAGE Gel

BPHL transfected lysate.



### Western Blot

Lane 1: BPHL transfected lysate ( 30.25 KDa)

Lane 2: Non-transfected lysate.

## Specification

Transfected Cell Line	293T
Plasmid	pCMV-BPHL full-length
Host	Human
Theoretical MW (kDa)	30.25
Interspecies Antigen Sequence	Mouse (86); Rat (86)

## Quality Control Testing

Transient overexpression cell lysate was tested with Anti-BPHL antibody ([H00000670-B01](#)) by Western Blots.  
SDS-PAGE Gel  
BPHL transfected lysate.  
Western Blot  
Lane 1: BPHL transfected lysate ( 30.25 KDa)  
Lane 2: Non-transfected lysate.

## Storage Buffer

1X Sample Buffer (50 mM Tris-HCl, 2% SDS, 10% glycerol, 300 mM 2-mercaptoethanol, 0.01% Bromophenol blue)

## Storage Instruction

Store at -80°C. Aliquot to avoid repeated freezing and thawing.

## Applications

- Western Blot

## Gene Info — BPHL

## Entrez GeneID

[670](#)

## GeneBank Accession#

[NM\\_004332.1](#)

## Protein Accession#

[NP\\_004323.1](#)

## Gene Name

BPHL

## Gene Alias

Bph-rp, MCNAA, MGC125930, MGC41865

## Gene Description

biphenyl hydrolase-like (serine hydrolase)

## Omim ID

[603156](#)

## Gene Ontology

[Hyperlink](#)

## Gene Summary

This gene encodes a member of the serine protease family of hydrolytic enzymes which contain a serine in their active site. The encoded protein may play a role in activation of the antiviral prodrug valacyclovir. Alternatively spliced transcript variants have been described

## Other Designations

OTTHUMP00000015959|biphenyl hydrolase-like|biphenyl hydrolase-like (serine hydrolase; breast epithelial mucin-associated antigen)|breast epithelial mucin-associated antigen|valacyclovirase