

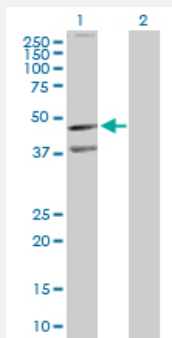
MaxPab®

CXCR5 purified MaxPab rabbit polyclonal antibody (D01P)

Catalog # H00000643-D01P

Size 100 ug

Applications

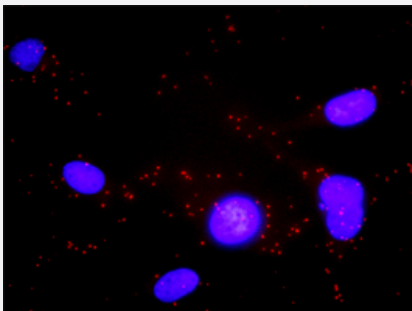


Western Blot (Transfected lysate)

Western Blot analysis of CXCR5 expression in transfected 293T cell line ([H00000643-T01](#)) by CXCR5 MaxPab polyclonal antibody.

Lane 1: CXCR5 transfected lysate(42.00 KDa).

Lane 2: Non-transfected lysate.



In situ Proximity Ligation Assay (Cell)

Proximity Ligation Analysis of protein-protein interactions between CXCR5 and GNAI2. HeLa cells were stained with anti-CXCR5 rabbit purified polyclonal 1:1200 and anti-GNAI2 mouse monoclonal antibody 1:50. Each red dot represents the detection of protein-protein interaction complex, and nuclei were counterstained with DAPI (blue).

Specification

Product Description

Rabbit polyclonal antibody raised against a full-length human CXCR5 protein.

Immunogen

CXCR5 (NP_001707.1, 1 a.a. ~ 372 a.a) full-length human protein.

Sequence

MNYPLTLEMDLENLEDFWELDRLDNYNDTSLVENHLCPEATGGLMASFKAVFVPVAYSLIFLLG
VIGNVLVLVILERHRQTRSSTETFLFHLAVADLLLVFILPFAVAEGSVGWVLGTFLCKTVIALHKVNF
YCSSLACIAVDRYLAMHAVHAYRHRLLSIHITCGTWLVGFLLALPEILFAKVSQGHNNSLPRC
TFSQENQAETHAWFTSRFLYHVAGFLLPMLVMGWCYVGVVHRLRQAQRRPQRQKAVRVAILVTS
IFFLCWSPYHMFIDTLARLKAVDNTCKLNGSLPVAITMCEFLGLAHCCCLNPMLYTFAGVKFRSDL
SRLLTKLGCTGPASLCQLFPSWRRSSLSESENATSLTTF

Host

Rabbit

Reactivity	Human
Quality Control Testing	Antibody reactive against mammalian transfected lysate.
Storage Buffer	In 1x PBS, pH 7.4
Storage Instruction	Store at -20°C or lower. Aliquot to avoid repeated freezing and thawing.

Applications

- Western Blot (Transfected lysate)

Western Blot analysis of CXCR5 expression in transfected 293T cell line ([H00000643-T01](#)) by CXCR5 MaxPab polyclonal antibody.

Lane 1: CXCR5 transfected lysate(42.00 KDa).

Lane 2: Non-transfected lysate.

[Protocol Download](#)

- In situ* Proximity Ligation Assay (Cell)

Proximity Ligation Analysis of protein-protein interactions between CXCR5 and GNAI2. HeLa cells were stained with anti-CXCR5 rabbit purified polyclonal 1:1200 and anti-GNAI2 mouse monoclonal antibody 1:50. Each red dot represents the detection of protein-protein interaction complex, and nuclei were counterstained with DAPI (blue).

Gene Info — CXCR5

Entrez GeneID	643
GeneBank Accession#	NM_001716
Protein Accession#	NP_001707.1
Gene Name	CXCR5
Gene Alias	BLR1, CD185, MDR15, MGC117347
Gene Description	chemokine (C-X-C motif) receptor 5
Omim ID	601613
Gene Ontology	Hyperlink

Gene Summary

This gene was identified as a gene specifically expressed in Burkitt's lymphoma and lymphatic tissues. The protein encoded by this gene is predicted to be a seven transmembrane G protein-coupled receptor and belongs to the CXC chemokine receptor family. BLC, a B-lymphocyte chemoattractant, was identified to be a specific ligand for this receptor. Studies of this gene and its mouse counterpart strongly suggest the essential function of this gene in B cell migration and localization within specific anatomic compartments, such as follicles in lymph nodes as well as in spleen. Two alternatively spliced variants of this gene exist. [provided by RefSeq]

Other Designations

Burkitt lymphoma receptor 1|Burkitt lymphoma receptor 1, GTP binding protein (chemokine (C-X-C motif) receptor 5)|Burkitt lymphoma receptor 1, GTP-binding protein|C-X-C chemokine receptor type 5|monocyte-derived receptor 15

Pathway

- [Chemokine signaling pathway](#)
- [Cytokine-cytokine receptor interaction](#)

Disease

- [Cardiovascular Diseases](#)
- [Diabetes Mellitus](#)
- [Edema](#)
- [Genetic Predisposition to Disease](#)