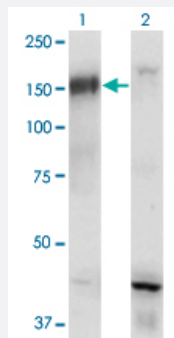


BCR monoclonal antibody (M01), clone 2E5

Catalog # H00000613-M01

Size 100 ug

Applications

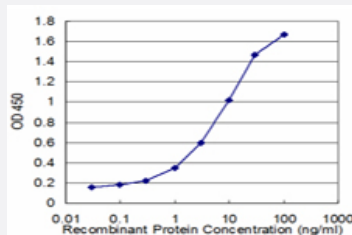


Western Blot (Transfected lysate)

Western Blot analysis of BCR expression in transfected 293T cell line by BCR monoclonal antibody (M01), clone 2E5.

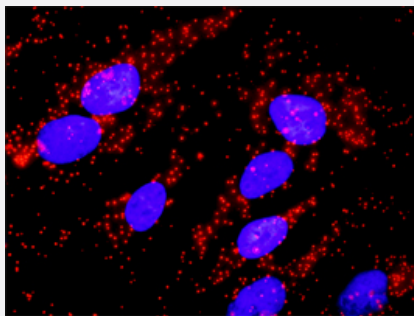
Lane 1: BCR transfected lysate (Predicted MW: 121 KDa).

Lane 2: Non-transfected lysate.



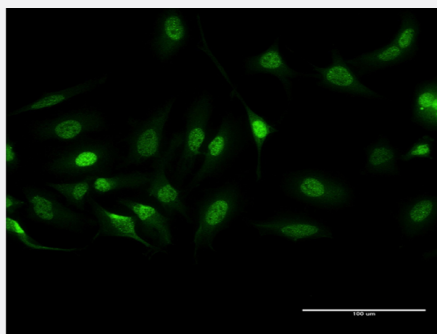
Sandwich ELISA (Recombinant protein)

Detection limit for recombinant GST tagged BCR is approximately 0.1ng/ml as a capture antibody.



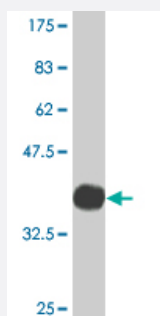
In situ Proximity Ligation Assay (Cell)

Proximity Ligation Analysis of protein-protein interactions between TP53 and BCR. HeLa cells were stained with anti-TP53 rabbit purified polyclonal 1:1200 and anti-BCR mouse monoclonal antibody 1:50. Each red dot represents the detection of protein-protein interaction complex, and nuclei were counterstained with DAPI (blue).



Immunofluorescence

Immunofluorescence of monoclonal antibody to BCR on HeLa cell . [antibody concentration 10 ug/ml]



Western Blot detection against Immunogen (36.63 KDa) .

Specification

Product Description	Mouse monoclonal antibody raised against a partial recombinant BCR.
Immunogen	BCR (NP_004318.3, 182 a.a. ~ 280 a.a) partial recombinant protein with GST tag. MW of the GST tag alone is 26 KDa.
Sequence	FHHERGLVKVNDKEVSDRISSLGSQAMQMERKKSQHGAGSSVGDASRPPYRGRSSESSCGVD GDYEDAELNPRFLKDNLDANGGSRPPWPPLEYQPYQ
Host	Mouse
Reactivity	Human
Isotype	IgG2a Kappa
Quality Control Testing	Antibody Reactive Against Recombinant Protein. Western Blot detection against Immunogen (36.63 KDa) .
Storage Buffer	In 1x PBS, pH 7.4
Storage Instruction	Store at -20°C or lower. Aliquot to avoid repeated freezing and thawing.

Applications

- Western Blot (Transfected lysate)

Western Blot analysis of BCR expression in transfected 293T cell line by BCR monoclonal antibody (M01), clone 2E5.

Lane 1: BCR transfected lysate (Predicted MW: 121 KDa).

Lane 2: Non-transfected lysate.

[Protocol Download](#)

- Western Blot (Recombinant protein)

[Protocol Download](#)

- Sandwich ELISA (Recombinant protein)

Detection limit for recombinant GST tagged BCR is approximately 0.1ng/ml as a capture antibody.

[Protocol Download](#)

- ELISA

- In situ* Proximity Ligation Assay (Cell)

Proximity Ligation Analysis of protein-protein interactions between TP53 and BCR. HeLa cells were stained with anti-TP53 rabbit purified polyclonal 1:1200 and anti-BCR mouse monoclonal antibody 1:50. Each red dot represents the detection of protein-protein interaction complex, and nuclei were counterstained with DAPI (blue).

- Immunofluorescence

Immunofluorescence of monoclonal antibody to BCR on HeLa cell . [antibody concentration 10 ug/ml]

Gene Info — BCR

Entrez GeneID

[613](#)

GeneBank Accession#

[NM_004327](#)

Protein Accession#

[NP_004318.3](#)

Gene Name

BCR

Gene Alias

ALL, BCR-ABL1, BCR1, CML, D22S11, D22S662, FLJ16453, PHL

Gene Description

breakpoint cluster region

Omim ID

[151410 608232](#)

Gene Ontology

[Hyperlink](#)

Gene Summary

A reciprocal translocation between chromosomes 22 and 9 produces the Philadelphia chromosome, which is often found in patients with chronic myelogenous leukemia. The chromosome 22 breakpoint for this translocation is located within the BCR gene. The translocation produces a fusion protein which is encoded by sequence from both BCR and ABL, the gene at the chromosome 9 breakpoint. Although the BCR-ABL fusion protein has been extensively studied, the function of the normal BCR gene product is not clear. The protein has serine/threonine kinase activity and is a GTPase-activating protein for p21rac. Two transcript variants encoding different isoforms have been found for this gene. [provided by RefSeq]

Other Designations

bcr-abl1 e14a3 chimeric protein

Pathway

- [Chronic myeloid leukemia](#)
- [Pathways in cancer](#)

Disease

- [Alzheimer disease](#)
- [Angina Pectoris](#)
- [Bipolar Disorder](#)
- [Brief Psychiatric Rating Scale](#)
- [Chromosome Breakage](#)
- [Coronary Vasospasm](#)
- [Depressive Disorder](#)
- [Genetic Predisposition to Disease](#)
- [Leukemia](#)
- [Lung Neoplasms](#)
- [Pulmonary Disease](#)
- [Small Cell Lung Carcinoma](#)
- [Tobacco Use Disorder](#)
- [Urinary Bladder Neoplasms](#)

- [Werner syndrome](#)