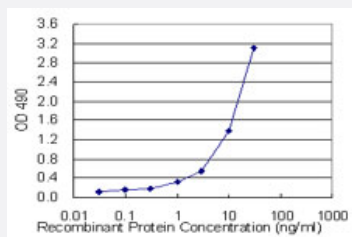


# TNFRSF17 (Human) Matched Antibody Pair

Catalog # H00000608-AP41

Size 1 Set

## Applications



Sandwich ELISA detection sensitivity ranging from 0.1 ng/ml to 100 ng/ml.

## Specification

<b>Product Description</b>	This antibody pair set comes with a matched antibody pair to detect and quantify the protein level of human TNFRSF17.
<b>Reactivity</b>	Human
<b>Interspecies Antigen Sequence</b>	Mouse (69%); Rat (60%)
<b>Quality Control Testing</b>	Standard curve using recombinant protein ( H00000608-P01 ) as an analyte. Sandwich ELISA detection sensitivity ranging from 0.1 ng/ml to 100 ng/ml.
<b>Supplied Product</b>	Antibody pair set content: 1. Capture antibody: mouse monoclonal anti-TNFRSF17 (100 ug) 2. Detection antibody: biotinylated mouse monoclonal anti-TNFRSF17, IgG1 Kappa (50 ug) *Reagents are sufficient for at least 3-5 x 96 well plates using recommended protocols.
<b>Storage Instruction</b>	Store reagents of the antibody pair set at -20°C or lower. Please aliquot to avoid repeated freeze thaw cycle. Reagents should be returned to -20°C storage immediately after use.

## Applications

- ELISA Pair (Recombinant protein)

[Protocol Download](#)

## Gene Info — TNFRSF17

Entrez GeneID [608](#)

Gene Name TNFRSF17

Gene Alias BCM, BCMA, CD269

Gene Description tumor necrosis factor receptor superfamily, member 17

Omim ID [109545](#)

Gene Ontology [Hyperlink](#)

**Gene Summary** The protein encoded by this gene is a member of the TNF-receptor superfamily. This receptor is preferentially expressed in mature B lymphocytes, and may be important for B cell development and autoimmune response. This receptor has been shown to specifically bind to the tumor necrosis factor (ligand) superfamily, member 13b (TNFSF13B/TALL-1/BAFF), and to lead to NF-kappaB and MAPK8/JNK activation. This receptor also binds to various TRAF family members, and thus may transduce signals for cell survival and proliferation. [provided by RefSeq]

**Other Designations** B cell maturation antigen|B-cell maturation factor|OTTHUMP00000160261

## Pathway

- [Cytokine-cytokine receptor interaction](#)

## Disease

- [Arthritis](#)
- [Asthma](#)
- [Colitis](#)
- [Crohn Disease](#)
- [Genetic Predisposition to Disease](#)
- [Hematologic Diseases](#)

- [Kidney Failure](#)
- [Multiple Myeloma](#)
- [Occupational Diseases](#)