

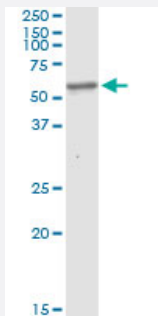
MaxPab®

## BBS4 MaxPab rabbit polyclonal antibody (D01)

Catalog # H00000585-D01

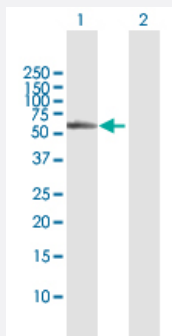
Size 100 uL

### Applications



#### Western Blot (Tissue lysate)

BBS4 MaxPab rabbit polyclonal antibody. Western Blot analysis of BBS4 expression in mouse liver.

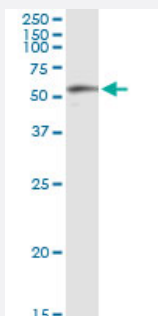


#### Western Blot (Transfected lysate)

Western Blot analysis of BBS4 expression in transfected 293T cell line ([H00000585-T01](#)) by BBS4 MaxPab polyclonal antibody.

Lane 1: BBS4 transfected lysate(58.30 KDa).

Lane 2: Non-transfected lysate.



#### Immunoprecipitation

Immunoprecipitation of BBS4 transfected lysate using anti-BBS4 MaxPab rabbit polyclonal antibody and Protein A Magnetic Bead, and immunoblotted with BBS4 purified MaxPab mouse polyclonal antibody (B01P) ([H00000585-B01P](#)).

### Specification

#### Product Description

Rabbit polyclonal antibody raised against a full-length human BBS4 protein.

<b>Immunogen</b>	BBS4 (NP_149017.2, 1 a.a. ~ 519 a.a) full-length human protein.
<b>Sequence</b>	MAEERVATRTQFPVSTESQKPRQKKAPEFPILKQNWLIHLHYRKDYEAACKAVIKEQLQETQGLC EYAIYQALIFRLEGNIQESLELFQTCAVLSPQSADNLKQVARSLFLLGKHKAAIEVYNEAAKLNQK DWEISHNLGVCYYLKQFNKAQDQLHNALNLRHDLTYIMLGKIHLLGDLDAIEVYKKAVEFSPE NTELLTTLGLLYLQLGIYQKAFEHLGNALTYDPTNYKAILAAGSMMQTHGDFDVALTKYRVVACAVP ESPPLWNNIGMCFFGKKKYVAAISCLKRANYLAPFDWKILYNLGLVHLMQQYASAFHFLSAAINF QPKMGELYMLLAVALTNLEDIENAKRAYAEAVHLDKCNPLVNLNYAVLLYNQGEKKNALAQYQEM EKKVSLKDNSSLEFDSEMVEMAQKLGAALQVGEALVWTKPVKDPKSKHQTTSTSKPASFQQP LGSNQALGQAMSSAAAYRTLPSGAGGTSQFTKPPSLPLEPEPAVESSPTETSEQIREK
<b>Host</b>	Rabbit
<b>Reactivity</b>	Human, Mouse
<b>Interspecies Antigen Sequence</b>	Mouse (89); Rat (89)
<b>Quality Control Testing</b>	Antibody reactive against mammalian transfected lysate.
<b>Storage Buffer</b>	No additive
<b>Storage Instruction</b>	Store at -20°C or lower. Aliquot to avoid repeated freezing and thawing.

## Applications

- Western Blot (Tissue lysate)

BBS4 MaxPab rabbit polyclonal antibody. Western Blot analysis of BBS4 expression in mouse liver.

[Protocol Download](#)

- Western Blot (Transfected lysate)

Western Blot analysis of BBS4 expression in transfected 293T cell line ([H00000585-T01](#)) by BBS4 MaxPab polyclonal antibody.

Lane 1: BBS4 transfected lysate(58.30 KDa).

Lane 2: Non-transfected lysate.

[Protocol Download](#)

- Immunoprecipitation

Immunoprecipitation of BBS4 transfected lysate using anti-BBS4 MaxPab rabbit polyclonal antibody and Protein A Magnetic Bead, and immunoblotted with BBS4 purified MaxPab mouse polyclonal antibody (B01P) ([H00000585-B01P](#)).

[Protocol Download](#)

## Gene Info — BBS4

Entrez GeneID [585](#)

GeneBank Accession# [NM\\_033028.2](#)

Protein Accession# [NP\\_149017.2](#)

Gene Name BBS4

Gene Alias -

Gene Description Bardet-Biedl syndrome 4

Omim ID [209900 600374](#)

Gene Ontology [Hyperlink](#)

**Gene Summary**

This gene is a member of the Bardet-Biedl syndrome (BBS) gene family. Bardet-Biedl syndrome is an autosomal recessive disorder characterized by severe pigmentary retinopathy, obesity, polydactyly, renal malformation and mental retardation. The proteins encoded by BBS gene family members are structurally diverse. The similar phenotypes exhibited by mutations in BBS gene family members are likely due to the protein's shared roles in cilia formation and function. Many BBS proteins localize to the basal bodies, ciliary axonemes, and pericentriolar regions of cells. BBS proteins may also be involved in intracellular trafficking via microtubule-related transport. The protein encoded by this gene has sequence similarity to O-linked N-acetylglucosamine (O-GlcNAc) transferases in plants and archaeobacteria and in human forms a multi-protein "BBSome" complex with six other BBS proteins. Alternative splice variants have been described but their predicted protein products have not been experimentally verified

Other Designations -

## Disease

- [Bardet-Biedl Syndrome](#)
- [Obesity](#)
- [Retinal Diseases](#)
- [Tobacco Use Disorder](#)