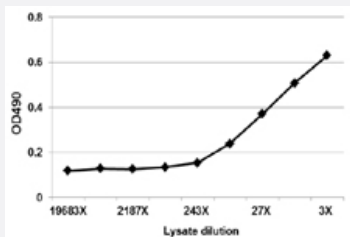


# BAG1 (Human) Matched Antibody Pair

Catalog # H00000573-AP51

Size 1 Set

## Applications



Sandwich ELISA detection sensitivity ranging from approximately 243x to 9x dilution of the BAG1 293T overexpression lysate (non-denatured).

## Specification

### Product Description

This antibody pair set comes with a matched antibody pair to detect and quantify the protein level of human BAG1.

### Reactivity

Human

### Quality Control Testing

Standard curve using BAG1 293T overexpression lysate (non-denatured) as an analyte. Sandwich ELISA detection sensitivity ranging from approximately 243x to 9x dilution of the BAG1 293T overexpression lysate (non-denatured).

### Supplied Product

Antibody pair set content:  
 1. Capture antibody: mouse monoclonal anti-BAG1, IgG2a Kappa (100 ug)  
 2. Detection antibody: rabbit purified polyclonal anti-BAG1 (50 ug)  
 \*Reagents are sufficient for at least 3-5 x 96 well plates using recommended protocols.

### Storage Instruction

Store reagents of the antibody pair set at -20°C or lower. Please aliquot to avoid repeated freeze thaw cycle. Reagents should be returned to -20°C storage immediately after use.

## Applications

- ELISA Pair (Transfected lysate)

[Protocol Download](#)

## Gene Info — BAG1

**Entrez GeneID** [573](#)**Gene Name** BAG1**Gene Alias** RAP46**Gene Description** BCL2-associated athanogene**Omim ID** [601497](#)**Gene Ontology** [Hyperlink](#)

**Gene Summary** The oncogene BCL2 is a membrane protein that blocks a step in a pathway leading to apoptosis or programmed cell death. The protein encoded by this gene binds to BCL2 and is referred to as BCL2-associated athanogene. It enhances the anti-apoptotic effects of BCL2 and represents a link between growth factor receptors and anti-apoptotic mechanisms. At least three protein isoforms are encoded by this mRNA through the use of a non-AUG (CUG) start site, and alternative, downstream, AUG translation initiation sites. [provided by RefSeq]

**Other Designations** BCL2-associated athanogene 1

## Disease

- [Cardiovascular Diseases](#)
- [Diabetes Mellitus](#)
- [Edema](#)
- [Head and Neck Neoplasms](#)
- [Narcolepsy](#)
- [Neoplasm Recurrence](#)
- [Neoplasms](#)