

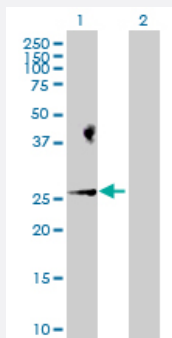
MaxPab®

BAD purified MaxPab rabbit polyclonal antibody (D01P)

Catalog # H00000572-D01P

Size 100 ug

Applications

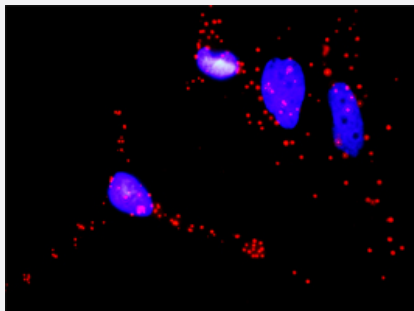


Western Blot (Transfected lysate)

Western Blot analysis of BAD expression in transfected 293T cell line ([H00000572-T01](#)) by BAD MaxPab polyclonal antibody.

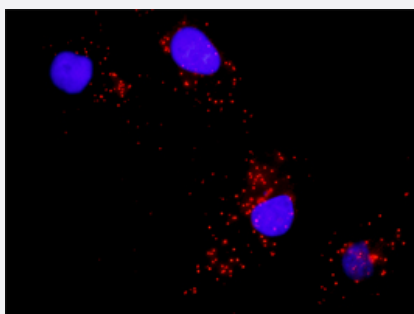
Lane 1: BAD transfected lysate(18.40 KDa).

Lane 2: Non-transfected lysate.



In situ Proximity Ligation Assay (Cell)

Proximity Ligation Analysis of protein-protein interactions between BAD and RAF1. HeLa cells were stained with anti-BAD rabbit purified polyclonal 1:1200 and anti-RAF1 mouse monoclonal antibody 1:50. Each red dot represents the detection of protein-protein interaction complex, and nuclei were counterstained with DAPI (blue).



In situ Proximity Ligation Assay (Cell)

Proximity Ligation Analysis of protein-protein interactions between BAD and MAPK8. Mahlavu cells were stained with anti-BAD rabbit purified polyclonal 1:1200 and anti-MAPK8 mouse monoclonal antibody 1:50. Each red dot represents the detection of protein-protein interaction complex, and nuclei were counterstained with DAPI (blue).

Specification

Product Description

Rabbit polyclonal antibody raised against a full-length human BAD protein.

Immunogen	BAD (NP_004313.1, 1 a.a. ~ 168 a.a) full-length human protein.
Sequence	MFQIPEFEPSEQEDSSSAERGLGSPAGDGPSGSGKHHRQAPGLLWDASHQQEQPTSSSHHG GAGAVEIRSRHSSYPAGTEDDEGMGEESPFRGRSRSAPPNLWAAQRYGRELRRMSDEFVDSF KKGLPRPKSAGTATQMRQSSSWTRVFQSWWDRNLGRGSSAPSQ
Host	Rabbit
Reactivity	Human
Quality Control Testing	Antibody reactive against mammalian transfected lysate.
Storage Buffer	In 1x PBS, pH 7.4
Storage Instruction	Store at -20°C or lower. Aliquot to avoid repeated freezing and thawing.

Applications

- Western Blot (Transfected lysate)

Western Blot analysis of BAD expression in transfected 293T cell line ([H00000572-T01](#)) by BAD MaxPab polyclonal antibody.

Lane 1: BAD transfected lysate(18.40 KDa).

Lane 2: Non-transfected lysate.

[Protocol Download](#)

- In situ* Proximity Ligation Assay (Cell)

Proximity Ligation Analysis of protein-protein interactions between BAD and RAF1. HeLa cells were stained with anti-BAD rabbit purified polyclonal 1:1200 and anti-RAF1 mouse monoclonal antibody 1:50. Each red dot represents the detection of protein-protein interaction complex, and nuclei were counterstained with DAPI (blue).

- In situ* Proximity Ligation Assay (Cell)

Proximity Ligation Analysis of protein-protein interactions between BAD and MAPK8. Mahlavu cells were stained with anti-BAD rabbit purified polyclonal 1:1200 and anti-MAPK8 mouse monoclonal antibody 1:50. Each red dot represents the detection of protein-protein interaction complex, and nuclei were counterstained with DAPI (blue).

Gene Info — BAD

Entrez GeneID	572
GeneBank Accession#	NM_004322
Protein Accession#	NP_004313.1
Gene Name	BAD

Gene Alias	BBC2, BCL2L8
Gene Description	BCL2-associated agonist of cell death
Omim ID	603167
Gene Ontology	Hyperlink
Gene Summary	<p>The protein encoded by this gene is a member of the BCL-2 family. BCL-2 family members are known to be regulators of programmed cell death. This protein positively regulates cell apoptosis by forming heterodimers with BCL-xL and BCL-2, and reversing their death repressor activity. Proapoptotic activity of this protein is regulated through its phosphorylation. Protein kinases AKT and MAP kinase, as well as protein phosphatase calcineurin were found to be involved in the regulation of this protein. Alternative splicing of this gene results in two transcript variants which encode the same isoform. [provided by RefSeq]</p>
Other Designations	BCL-X/BCL-2 binding protein BCL2-antagonist of cell death protein BCL2-binding component 6 BCL2-binding protein

Pathway

- [Acute myeloid leukemia](#)
- [Amyotrophic lateral sclerosis \(ALS\)](#)
- [Apoptosis](#)
- [Chronic myeloid leukemia](#)
- [Colorectal cancer](#)
- [Endometrial cancer](#)
- [ErbB signaling pathway](#)
- [Focal adhesion](#)
- [Insulin signaling pathway](#)
- [Melanoma](#)
- [Neurotrophin signaling pathway](#)
- [Non-small cell lung cancer](#)
- [Pancreatic cancer](#)
- [Pathways in cancer](#)

- [Prostate cancer](#)
- [VEGF signaling pathway](#)

Disease

- [Cardiovascular Diseases](#)
- [Diabetes Mellitus](#)
- [Edema](#)
- [Genetic Predisposition to Disease](#)
- [Lymphoma](#)
- [Parkinson disease](#)
- [Thyroid Neoplasms](#)