

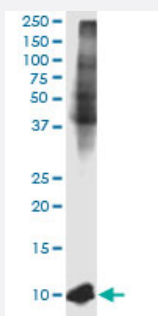
CX Grade

B2M monoclonal antibody (M01J), clone 3F9-2C2

Catalog # H00000567-M01J

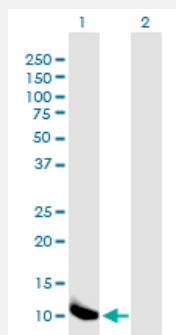
Size 100 ug

Applications



Western Blot (Cell lysate)

B2M monoclonal antibody (M01J), clone 3F9-2C2. Western Blot analysis of B2M expression in U-2 OS.

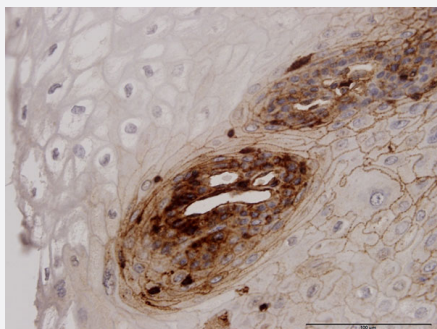


Western Blot (Transfected lysate)

Western Blot analysis of B2M expression in transfected 293T cell line by B2M monoclonal antibody (M01J), clone 3F9-2C2.

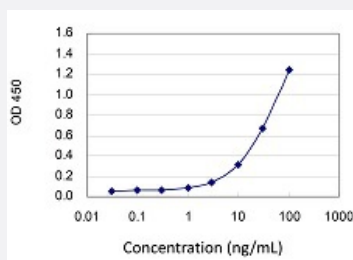
Lane 1: B2M transfected lysate (Predicted MW: 13.7 KDa).

Lane 2: Non-transfected lysate.



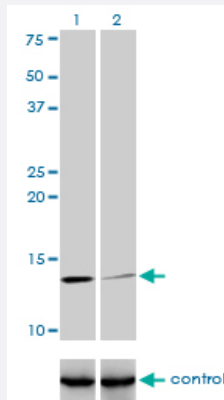
Immunohistochemistry (Formalin/PFA-fixed paraffin-embedded sections)

Immunoperoxidase of monoclonal antibody to B2M on formalin-fixed paraffin-embedded human esophagus. [antibody concentration 3 ug/ml]



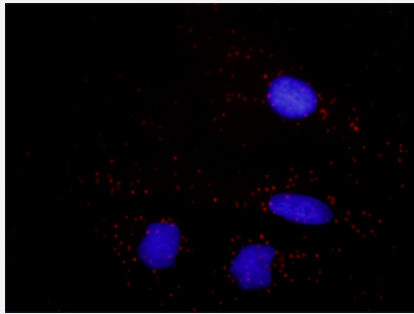
Sandwich ELISA (Recombinant protein)

Detection limit for recombinant GST tagged B2M is 1 ng/ml as a capture antibody.



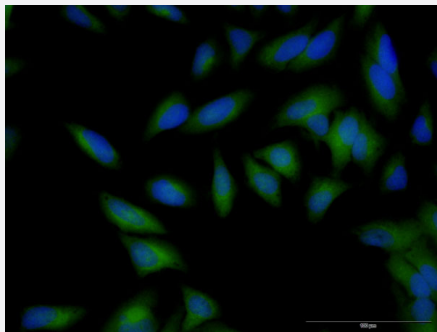
RNAi Knockdown (Antibody validated)

Western blot analysis of B2M over-expressed 293 cell line, cotransfected with B2M Validated Chimera RNAi (Cat # H00000567-R01V) (Lane 2) or non-transfected control (Lane 1). Blot probed with B2M monoclonal antibody (M01), clone 3F9-2C2 (Cat # H00000567-M01). GAPDH (36.1 kDa) used as specificity and loading control.



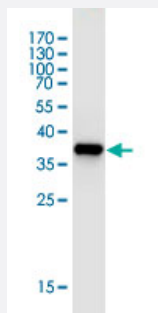
In situ Proximity Ligation Assay (Cell)

Proximity Ligation Analysis of protein-protein interactions between CALR and B2M. HeLa cells were stained with anti-CALR rabbit purified polyclonal 1:1200 and anti-B2M mouse monoclonal antibody 1:50. Each red dot represents the detection of protein-protein interaction complex, and nuclei were counterstained with DAPI (blue).



Immunofluorescence

Immunofluorescence of monoclonal antibody to B2M on HeLa cell . [antibody concentration 10 ug/ml]



Western Blot detection against Immunogen (38.83 KDa) .

Specification

Product Description

Mouse monoclonal antibody raised against a full-length recombinant B2M.
This product is belong to Cell Culture Grade Antibody (CX Grade).

Immunogen	B2M (AAH32589.1, 1 a.a. ~ 119 a.a) full-length recombinant protein with GST tag. MW of the GST tag alone is 26 KDa.
Sequence	MSRSVALAVLALLSLSGLEAIQRTPKIQVYSRHPAENGKSNFLNCYVSGFHPSDIEVDLLKNGERIEKVEHSDLSFSKDWSFYLLYTEFTPTEKDEYACRVNHVTL SQPKMKWDRDM
Host	Mouse
Reactivity	Human
Preparation Method	Cell Culture Production
Isotype	IgG2b Kappa
Quality Control Testing	Antibody Reactive Against Recombinant Protein. Western Blot detection against Immunogen (38.83 KDa) .
Storage Buffer	In 1x PBS, pH 7.4
Storage Instruction	Store at -20°C or lower. Aliquot to avoid repeated freezing and thawing.

Applications

- Western Blot (Cell lysate)

B2M monoclonal antibody (M01J), clone 3F9-2C2. Western Blot analysis of B2M expression in U-2 OS.

[Protocol Download](#)

- Western Blot (Transfected lysate)

Western Blot analysis of B2M expression in transfected 293T cell line by B2M monoclonal antibody (M01J), clone 3F9-2C2.

Lane 1: B2M transfected lysate (Predicted MW: 13.7 KDa).

Lane 2: Non-transfected lysate.

[Protocol Download](#)

- Western Blot (Recombinant protein)

[Protocol Download](#)

- Immunohistochemistry (Formalin/PFA-fixed paraffin-embedded sections)

Immunoperoxidase of monoclonal antibody to B2M on formalin-fixed paraffin-embedded human esophagus. [antibody concentration 3 ug/ml]

[Protocol Download](#)

- Sandwich ELISA (Recombinant protein)

Detection limit for recombinant GST tagged B2M is 1 ng/ml as a capture antibody.

[Protocol Download](#)

- ELISA

- RNAi Knockdown (Antibody validated)

Western blot analysis of B2M over-expressed 293 cell line, cotransfected with B2M Validated Chimera RNAi (Cat # H00000567-R01V) (Lane 2) or non-transfected control (Lane 1). Blot probed with B2M monoclonal antibody (M01), clone 3F9-2C2 (Cat # H00000567-M01). GAPDH (36.1 kDa) used as specificity and loading control.

[Protocol Download](#)

- *In situ* Proximity Ligation Assay (Cell)

Proximity Ligation Analysis of protein-protein interactions between CALR and B2M. HeLa cells were stained with anti-CALR rabbit purified polyclonal 1:1200 and anti-B2M mouse monoclonal antibody 1:50. Each red dot represents the detection of protein-protein interaction complex, and nuclei were counterstained with DAPI (blue).

- Immunofluorescence

Immunofluorescence of monoclonal antibody to B2M on HeLa cell . [antibody concentration 10 ug/ml]

Gene Info — B2M

Entrez GeneID [567](#)

GeneBank Accession# [BC032589.1](#)

Protein Accession# [AAH32589.1](#)

Gene Name B2M

Gene Alias -

Gene Description beta-2-microglobulin

Omim ID [109700 241600](#)

Gene Ontology [Hyperlink](#)

Gene Summary This gene encodes a serum protein found in association with the major histocompatibility complex (MHC) class I heavy chain on the surface of nearly all nucleated cells. The protein has a predominantly beta-pleated sheet structure that can form amyloid fibrils in some pathological conditions. A mutation in this gene has been shown to result in hypercatabolic hypoproteinemia

Other Designations beta chain of MHC class I molecules|beta-2-microglobin

Pathway

- [Antigen processing and presentation](#)

Disease

- [Arthritis](#)
- [Cardiovascular Diseases](#)
- [Diabetes Mellitus](#)
- [Disease](#)
- [Edema](#)
- [Gastritis](#)
- [Genetic Predisposition to Disease](#)
- [Kidney Failure](#)
- [Osteoarthritis](#)
- [Parkinson disease](#)
- [Stomach Neoplasms](#)