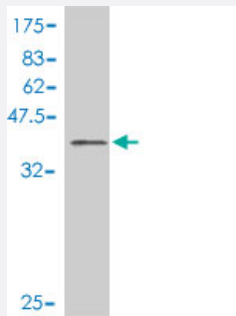


AXL polyclonal antibody (A01)

Catalog # H00000558-A01

Size 50 uL

Applications



Western Blot detection against Immunogen (38.21 KDa) .

Specification

Product Description	Mouse polyclonal antibody raised against a partial recombinant AXL.
Immunogen	AXL (AAH32229, 30 a.a. ~ 140 a.a) partial recombinant protein with GST tag.
Sequence	TQAEESPFVGNPGNITGARGLTGTLRCQLQVQGEPPEVHWLRDGGQILELADSTQTQVPLGEDEQ DDWIVVSQLRITSLQLSDTGQYQCLVFLGHQTFVSQPGYVGLEGLPY
Host	Mouse
Reactivity	Human
Quality Control Testing	Antibody Reactive Against Recombinant Protein. Western Blot detection against Immunogen (38.21 KDa) .
Storage Buffer	50 % glycerol
Storage Instruction	Store at -20°C or lower. Aliquot to avoid repeated freezing and thawing.

Applications

- Western Blot (Recombinant protein)

[Protocol Download](#)

- ELISA

Gene Info — AXL

Entrez GeneID [558](#)

GeneBank Accession# [BC032229](#)

Protein Accession# [AAH32229](#)

Gene Name AXL

Gene Alias JTK11, UFO

Gene Description AXL receptor tyrosine kinase

Omim ID [109135](#)

Gene Ontology [Hyperlink](#)

Gene Summary The protein encoded by this gene is a member of the receptor tyrosine kinase subfamily. Although it is similar to other receptor tyrosine kinases, this protein represents a unique structure of the extracellular region that juxtaposes IgL and FNIII repeats. It transduces signals from the extracellular matrix into the cytoplasm by binding growth factors like vitamin K-dependent protein growth-arrest-specific gene 6. It is involved in the stimulation of cell proliferation and can also mediate cell aggregation by homophilic binding. Alternatively spliced transcript variants encoding different isoforms have been identified. [provided by RefSeq]

Other Designations AXL transforming sequence/gene|oncogene AXL

Disease

- [Cardiovascular Diseases](#)
- [Carotid Artery Diseases](#)
- [Diabetes Mellitus](#)
- [Edema](#)
- [Genetic Predisposition to Disease](#)

- [Stroke](#)