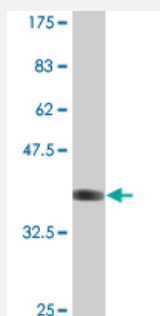


# ATP2A1 monoclonal antibody (M05A), clone 4B8

Catalog # H00000487-M05A

Size 200 uL

## Applications



Western Blot detection against Immunogen (35.75 KDa) .

## Specification

<b>Product Description</b>	Mouse monoclonal antibody raised against a partial recombinant ATP2A1.
<b>Immunogen</b>	ATP2A1 (NP_775293, 522 a.a. ~ 612 a.a) partial recombinant protein with GST tag. MW of the GST tag alone is 26 KDa.
<b>Sequence</b>	IDRCNYVRVGTTTRVPLTGVPVKEKIMAVIKEWGTGRDTRLCLALATRDTPPKREEMVLDDSFLEY ETDLTFVGVVGMLDPPRKEVTGSIQ
<b>Host</b>	Mouse
<b>Reactivity</b>	Human
<b>Isotype</b>	IgG3 Kappa
<b>Quality Control Testing</b>	Antibody Reactive Against Recombinant Protein. Western Blot detection against Immunogen (35.75 KDa) .
<b>Storage Buffer</b>	In ascites fluid
<b>Storage Instruction</b>	Store at -20°C or lower. Aliquot to avoid repeated freezing and thawing.

## Applications

- Western Blot (Recombinant protein)

[Protocol Download](#)

- ELISA

## Gene Info — ATP2A1

Entrez GeneID [487](#)

GeneBank Accession# [NM\\_173201](#)

Protein Accession# [NP\\_775293](#)

Gene Name ATP2A1

Gene Alias ATP2A, SERCA1

Gene Description ATPase, Ca<sup>++</sup> transporting, cardiac muscle, fast twitch 1

Omim ID [108730 601003](#)

Gene Ontology [Hyperlink](#)

**Gene Summary** This gene encodes one of the SERCA Ca(2+)-ATPases, which are intracellular pumps located in the sarcoplasmic or endoplasmic reticula of muscle cells. This enzyme catalyzes the hydrolysis of ATP coupled with the translocation of calcium from the cytosol to the sarcoplasmic reticulum lumen, and is involved in muscular excitation and contraction. Mutations in this gene cause some autosomal recessive forms of Brody disease, characterized by increasing impairment of muscular relaxation during exercise. Alternative splicing results in two transcript variants encoding different isoforms. [provided by RefSeq]

**Other Designations** ATPase, Ca<sup>++</sup> transporting, fast twitch 1|OTTHUMP00000162562|SR Ca(2+)-ATPase 1|calcium pump 1|calcium-transporting ATPase sarcoplasmic reticulum type, fast twitch skeletal muscle isoform|endoplasmic reticulum class 1/2 Ca(2+) ATPase|sarcoplasmic/endoplasm

## Pathway

- [Calcium signaling pathway](#)