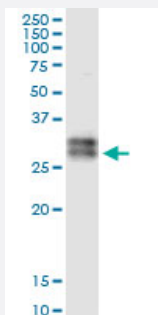


ATP1B3 (Human) IP-WB Antibody Pair

Catalog # H00000483-PW2

Size 1 Set

Applications



Immunoprecipitation of ATP1B3 transfected lysate using rabbit polyclonal anti-ATP1B3 and Protein A Magnetic Bead ([U0007](#)), and immunoblotted with mouse purified polyclonal anti-ATP1B3.

Specification

Product Description	This IP-WB antibody pair set comes with one antibody for immunoprecipitation and another to detect the precipitated protein in western blot.
Reactivity	Human
Quality Control Testing	Immunoprecipitation-Western Blot (IP-WB) Immunoprecipitation of ATP1B3 transfected lysate using rabbit polyclonal anti-ATP1B3 and Protein A Magnetic Bead (U0007), and immunoblotted with mouse purified polyclonal anti-ATP1B3.
Supplied Product	Antibody pair set content: 1. Antibody pair for IP: rabbit polyclonal anti-ATP1B3 (300 ul) 2. Antibody pair for WB: mouse purified polyclonal anti-ATP1B3 (50 ug)
Storage Instruction	Store reagents of the antibody pair set at -20°C or lower. Please aliquot to avoid repeated freeze thaw cycle. Reagents should be returned to -20°C storage immediately after use.

Applications

- Immunoprecipitation-Western Blot

[Protocol Download](#)

Gene Info — ATP1B3

Entrez GeneID [483](#)

Gene Name ATP1B3

Gene Alias ATPB-3, CD298, FLJ29027

Gene Description ATPase, Na⁺/K⁺ transporting, beta 3 polypeptide

Omim ID [601867](#)

Gene Ontology [Hyperlink](#)

Gene Summary

The protein encoded by this gene belongs to the family of Na⁺/K⁺ and H⁺/K⁺ ATPases beta chain proteins, and to the subfamily of Na⁺/K⁺ -ATPases. Na⁺/K⁺ -ATPase is an integral membrane protein responsible for establishing and maintaining the electrochemical gradients of Na and K ions across the plasma membrane. These gradients are essential for osmoregulation, for sodium-coupled transport of a variety of organic and inorganic molecules, and for electrical excitability of nerve and muscle. This enzyme is composed of two subunits, a large catalytic subunit (alpha) and a smaller glycoprotein subunit (beta). The beta subunit regulates, through assembly of alpha/beta heterodimers, the number of sodium pumps transported to the plasma membrane. The glycoprotein in subunit of Na⁺/K⁺ -ATPase is encoded by multiple genes. This gene encodes a beta 3 subunit. This gene encodes a beta 3 subunit. A pseudogene exists for this gene, and it is located on chromosome 2. [provided by RefSeq]

Other Designations Na⁺/K⁺ -ATPase beta 3 subunit|Na, K-ATPase beta-3 polypeptide|sodium/potassium-dependent ATPase beta-3 subunit|sodium/potassium-transporting ATPase beta-3 chain

Pathway

- [Cardiac muscle contraction](#)