

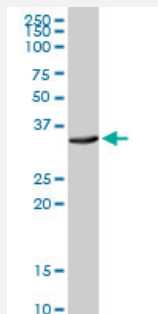
MaxPab®

ATP1B3 purified MaxPab rabbit polyclonal antibody (D01P)

Catalog # H00000483-D01P

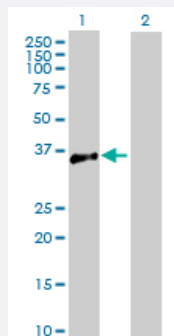
Size 100 ug

Applications



Western Blot (Cell lysate)

ATP1B3 MaxPab rabbit polyclonal antibody. Western Blot analysis of ATP1B3 expression in PC-12.



Western Blot (Transfected lysate)

Western Blot analysis of ATP1B3 expression in transfected 293T cell line ([H00000483-T01](#)) by ATP1B3 MaxPab polyclonal antibody.

Lane 1: ATP1B3 transfected lysate(31.50 KDa).

Lane 2: Non-transfected lysate.

Specification

Product Description

Rabbit polyclonal antibody raised against a full-length human ATP1B3 protein.

Immunogen

ATP1B3 (NP_001670.1, 1 a.a. ~ 279 a.a) full-length human protein.

Sequence

MTKNEKKSLNQSLAEWKLFYNPPTTGEFLGRTAKSWGILLLFYLVFYGFLLAALFSFTMWVMLQTLN
DEVPKYRDQIPSPGLMVFPKPVTALEYTFSRSDPTSAGYIEDLKKFLKPYTLEEQKNLTVCPDGA
LFEQKGPVYVACQFPISLLQACSGMNDPFDGYSQGNPCILVKMNRIGLKPEGVPRIDCVSKNEDI
PNVAVYPHNGMIDLKYFPYGGKKLHVGYLQPLVAVQVSFAPNNTGKEVTVECKIDGSANLKSQDD
RDKFLGRVMFKITARA

Host

Rabbit

| | |
|-------------------------|--|
| Reactivity | Human, Rat |
| Quality Control Testing | Antibody reactive against mammalian transfected lysate. |
| Storage Buffer | In 1x PBS, pH 7.4 |
| Storage Instruction | Store at -20°C or lower. Aliquot to avoid repeated freezing and thawing. |

Applications

- Western Blot (Cell lysate)

ATP1B3 MaxPab rabbit polyclonal antibody. Western Blot analysis of ATP1B3 expression in PC-12.

[Protocol Download](#)

- Western Blot (Transfected lysate)

Western Blot analysis of ATP1B3 expression in transfected 293T cell line ([H00000483-T01](#)) by ATP1B3 MaxPab polyclonal antibody.

Lane 1: ATP1B3 transfected lysate(31.50 KDa).

Lane 2: Non-transfected lysate.

[Protocol Download](#)

Gene Info — ATP1B3

| | |
|---------------------|--|
| Entrez GeneID | 483 |
| GeneBank Accession# | NM_001679 |
| Protein Accession# | NP_001670.1 |
| Gene Name | ATP1B3 |
| Gene Alias | ATPB-3, CD298, FLJ29027 |
| Gene Description | ATPase, Na ⁺ /K ⁺ transporting, beta 3 polypeptide |
| Omim ID | 601867 |
| Gene Ontology | Hyperlink |

Gene Summary

The protein encoded by this gene belongs to the family of Na⁺/K⁺ and H⁺/K⁺ ATPases beta chain proteins, and to the subfamily of Na⁺/K⁺ -ATPases. Na⁺/K⁺ -ATPase is an integral membrane protein responsible for establishing and maintaining the electrochemical gradients of Na and K ions across the plasma membrane. These gradients are essential for osmoregulation, for sodium-coupled transport of a variety of organic and inorganic molecules, and for electrical excitability of nerve and muscle. This enzyme is composed of two subunits, a large catalytic subunit (alpha) and a smaller glycoprotein subunit (beta). The beta subunit regulates, through assembly of alpha/beta heterodimers, the number of sodium pumps transported to the plasma membrane. The glycoprotein subunit of Na⁺/K⁺ -ATPase is encoded by multiple genes. This gene encodes a beta 3 subunit. This gene encodes a beta 3 subunit. A pseudogene exists for this gene, and it is located on chromosome 2. [provided by RefSeq]

Other Designations

Na⁺/K⁺ -ATPase beta 3 subunit|Na, K-ATPase beta-3 polypeptide|sodium/potassium-dependent ATPase beta-3 subunit|sodium/potassium-transporting ATPase beta-3 chain

Pathway

- [Cardiac muscle contraction](#)