

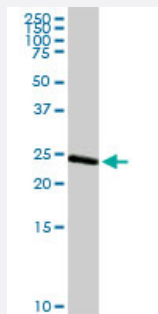
MaxPab®

ARHGDIA MaxPab rabbit polyclonal antibody (D01)

Catalog # H00000396-D01

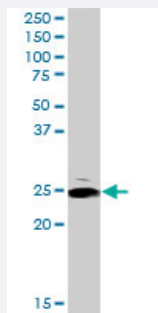
Size 100 uL

Applications



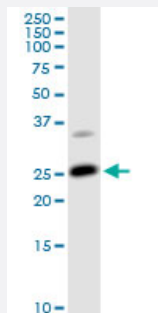
Western Blot (Tissue lysate)

ARHGDIA MaxPab rabbit polyclonal antibody. Western Blot analysis of ARHGDIA expression in human kidney.



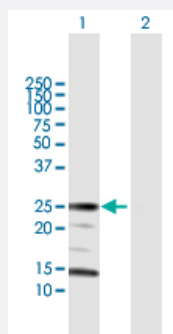
Western Blot (Tissue lysate)

ARHGDIA MaxPab rabbit polyclonal antibody. Western Blot analysis of ARHGDIA expression in mouse spleen.



Western Blot (Cell lysate)

ARHGDIA MaxPab rabbit polyclonal antibody. Western Blot analysis of ARHGDIA expression in Jurkat.

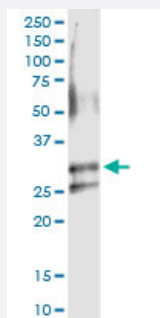


Western Blot (Transfected lysate)

Western Blot analysis of ARHGDIA expression in transfected 293T cell line ([H00000396-T02](#)) by ARHGDIA MaxPab polyclonal antibody.

Lane 1: ARHGDIA transfected lysate(23.2 KDa).

Lane 2: Non-transfected lysate.



Immunoprecipitation

Immunoprecipitation of ARHGDIA transfected lysate using anti-ARHGDIA MaxPab rabbit polyclonal antibody and Protein A Magnetic Bead, and immunoblotted with ARHGDIA purified MaxPab mouse polyclonal antibody (B02P) ([H00000396-B02P](#)).

Specification

Product Description	Rabbit polyclonal antibody raised against a full-length human ARHGDIA protein.
Immunogen	ARHGDIA (NP_004300.1, 1 a.a. ~ 204 a.a) full-length human protein.
Sequence	MAEQEPTAEQLAQIAAENEDEHSVNYKPPAQKSIQEIQLDKDDESLRKYKEALLGRVAVSADP NVPNVVVTGLTLCSSAPGPLELDLTGDLSEFKKQSFVLKEGVEYRIKISFRVNREIVSGMKYIQHT YRKGVKIDKTDYMGSYGPRAEYEFLTPVEEAPKGMLARGSYSIKSRFTDDDKTDHLSWEWNLT IKKDWKD
Host	Rabbit
Reactivity	Human, Mouse
Quality Control Testing	Antibody reactive against mammalian transfected lysate.
Storage Buffer	No additive
Storage Instruction	Store at -20°C or lower. Aliquot to avoid repeated freezing and thawing.

Applications

● Western Blot (Tissue lysate)

ARHGDIA MaxPab rabbit polyclonal antibody. Western Blot analysis of ARHGDIA expression in human kidney.

[Protocol Download](#)

● Western Blot (Tissue lysate)

ARHGDIA MaxPab rabbit polyclonal antibody. Western Blot analysis of ARHGDIA expression in mouse spleen.

[Protocol Download](#)

- Western Blot (Cell lysate)

ARHGDI1 MaxPab rabbit polyclonal antibody. Western Blot analysis of ARHGDI1 expression in Jurkat.

[Protocol Download](#)

- Western Blot (Transfected lysate)

Western Blot analysis of ARHGDI1 expression in transfected 293T cell line ([H00000396-T02](#)) by ARHGDI1 MaxPab polyclonal antibody.

Lane 1: ARHGDI1 transfected lysate(23.2 KDa).

Lane 2: Non-transfected lysate.

[Protocol Download](#)

- Immunoprecipitation

Immunoprecipitation of ARHGDI1 transfected lysate using anti-ARHGDI1 MaxPab rabbit polyclonal antibody and Protein A Magnetic Bead, and immunoblotted with ARHGDI1 purified MaxPab mouse polyclonal antibody (B02P) ([H00000396-B02P](#)).

[Protocol Download](#)

Gene Info — ARHGDI1

Entrez GeneID [396](#)

GeneBank Accession# [NM_004309](#)

Protein Accession# [NP_004300.1](#)

Gene Name ARHGDI1

Gene Alias GDIA1, MGC117248, RHOGDI, RHOGDI-1

Gene Description Rho GDP dissociation inhibitor (GDI) alpha

Omim ID [601925](#)

Gene Ontology [Hyperlink](#)

Gene Summary Aplysia Ras-related homologs (ARHs), also called Rho genes, belong to the RAS gene superfamily encoding small guanine nucleotide exchange (GTP/GDP) factors. The ARH proteins may be kept in the inactive, GDP-bound state by interaction with GDP dissociation inhibitors, such as ARHGDI1 (Leffers et al., 1993 [PubMed 8262133]).[supplied by OMIM]

Other Designations -

Pathway

- [Neurotrophin signaling pathway](#)