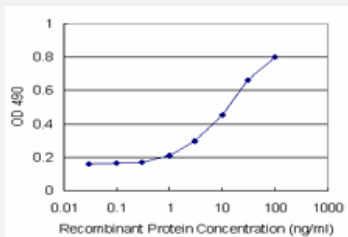


ARHGDIA (Human) Matched Antibody Pair

Catalog # H00000396-AP12 Size 1 Set

Applications



Sandwich ELISA detection sensitivity ranging from 1 ng/ml to 100 ng/ml.

Specification

Product Description	This antibody pair set comes with a matched antibody pair to detect and quantify the protein level of human ARHGDIA.
Reactivity	Human
Quality Control Testing	Standard curve using recombinant protein (H00000396-P01) as an analyte. Sandwich ELISA detection sensitivity ranging from 1 ng/ml to 100 ng/ml.
Supplied Product	Antibody pair set content: 1. Capture antibody: rabbit MaxPab® affinity purified polyclonal anti-ARHGDIA (100 ug) 2. Detection antibody: mouse monoclonal anti-ARHGDIA, IgG1 Kappa (20 ug) *Reagents are sufficient for at least 1-2 x 96 well plates using recommended protocols.
Storage Instruction	Store reagents of the antibody pair set at -20°C or lower. Please aliquot to avoid repeated freeze thaw cycle. Reagents should be returned to -20°C storage immediately after use.

Applications

- ELISA Pair (Recombinant protein)

[Protocol Download](#)

Gene Info — ARHGDIA

Entrez GeneID [396](#)**Gene Name** ARHGDIA**Gene Alias** GDIA1, MGC117248, RHOGDI, RHOGDI-1**Gene Description** Rho GDP dissociation inhibitor (GDI) alpha**Omim ID** [601925](#)**Gene Ontology** [Hyperlink](#)

Gene Summary Aplysia Ras-related homologs (ARHs), also called Rho genes, belong to the RAS gene superfamily encoding small guanine nucleotide exchange (GTP/GDP) factors. The ARH proteins may be kept in the inactive, GDP-bound state by interaction with GDP dissociation inhibitors, such as ARHGDIA (Leffers et al., 1993 [PubMed 8262133]).[supplied by OMIM]

Other Designations -

Pathway

- [Neurotrophin signaling pathway](#)