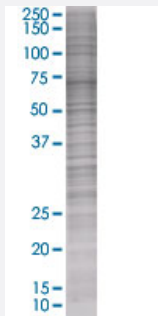


RND3 293T Cell Transient Overexpression Lysate(Denatured)

Catalog # H00000390-T02

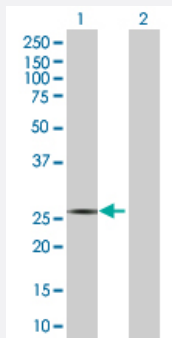
Size 100 uL

Applications



SDS-PAGE Gel

RND3 transfected lysate.



Western Blot

Lane 1: RND3 transfected lysate (26.95 KDa)

Lane 2: Non-transfected lysate.

Specification

Transfected Cell Line 293T

Plasmid pCMV-RND3 full-length

Host Human

Theoretical MW (kDa) 26.95

Quality Control Testing Transient overexpression cell lysate was tested with Anti-RND3 antibody ([H00000390-B02](#)) by Western Blots.
 SDS-PAGE Gel
 RND3 transfected lysate.
 Western Blot
 Lane 1: RND3 transfected lysate (26.95 KDa)
 Lane 2: Non-transfected lysate.

Storage Buffer	1X Sample Buffer (50 mM Tris-HCl, 2% SDS, 10% glycerol, 300 mM 2-mercaptoethanol, 0.01% Bromophenol blue)
Storage Instruction	Store at -80°C. Aliquot to avoid repeated freezing and thawing.

Applications

- Western Blot

Gene Info — RND3

Entrez GeneID	390
GeneBank Accession#	NM_005168
Protein Accession#	NP_005159
Gene Name	RND3
Gene Alias	ARHE, Rho8, RhoE, memB
Gene Description	Rho family GTPase 3
Omim ID	602924
Gene Ontology	Hyperlink

Gene Summary	Members of the Rho family of Ras-related GTPases, such as ARHE, regulate the organization of the actin cytoskeleton in response to extracellular growth factors. Like Ras (MIM 190020), Rho family members appear to cycle between an inactive GDP-bound form and an active GTP-bound form. Three major regulators of Rho activity have been identified: RhoGDIs, which interact with the GDP-bound Rho proteins to keep them in a resting complex (see MIM 601925); GEFs, which promote GDP/GTP exchange leading to activation of Rho proteins (see MIM 601855); and GAPs, which stimulate GTP hydrolysis and return the activated Rho protein to its inactive form (see MIM 602680) (Nobes et al., 1998 [PubMed 9531558]).[supplied by OMIM]
--------------	--

Other Designations	OTTHUMP00000162685 ras homolog gene family, member E small GTP binding protein Rho8
--------------------	---