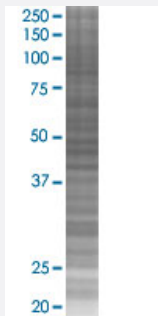


# RHOC 293T Cell Transient Overexpression Lysate(Denatured)

Catalog # H00000389-T02

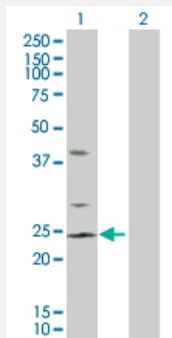
Size 100 uL

## Applications



### SDS-PAGE Gel

RHOC transfected lysate.



### Western Blot

Lane 1: RHOC transfected lysate ( 22.00 KDa)

Lane 2: Non-transfected lysate.

## Specification

Transfected Cell Line	293T
Plasmid	pCMV-RHOC full-length
Host	Human
Theoretical MW (kDa)	22
Interspecies Antigen Sequence	Mouse (100); Rat (100)

## Quality Control Testing

Transient overexpression cell lysate was tested with Anti-RHOC antibody ([H00000389-D01P](#)) by Western Blots.  
SDS-PAGE Gel  
RHOC transfected lysate.  
Western Blot  
Lane 1: RHOC transfected lysate ( 22.00 KDa)  
Lane 2: Non-transfected lysate.

## Storage Buffer

1X Sample Buffer (50 mM Tris-HCl, 2% SDS, 10% glycerol, 300 mM 2-mercaptoethanol, 0.01% Bromophenol blue)

## Storage Instruction

Store at -80°C. Aliquot to avoid repeated freezing and thawing.

## Applications

- Western Blot

## Gene Info — RHOC

## Entrez GeneID

[389](#)

## GeneBank Accession#

[NM\\_175744](#)

## Protein Accession#

[NP\\_786886.1](#)

## Gene Name

RHOC

## Gene Alias

ARH9, ARHC, H9, MGC1448, MGC61427, RHOH9

## Gene Description

ras homolog gene family, member C

## Omim ID

[165380](#)

## Gene Ontology

[Hyperlink](#)

## Gene Summary

This gene encodes a member of the Rho family of small GTPases, which cycle between inactive GDP-bound and active GTP-bound states and function as molecular switches in signal transduction cascades. Rho proteins promote reorganization of the actin cytoskeleton and regulate cell shape, attachment, and motility. The protein encoded by this gene is prenylated at its C-terminus, and localizes to the cytoplasm and plasma membrane. It is thought to be important in cell locomotion. Overexpression of this gene is associated with tumor cell proliferation and metastasis. Multiple alternatively spliced variants, encoding the same protein, have been identified. [provided by RefSeq]

## Other Designations

OTTHUMP00000013675|OTTHUMP00000013676|OTTHUMP00000013802|OTTHUMP00000013805|OTTHUMP00000013807|OTTHUMP00000013809|RAS-related homolog 9|Rho-related GTP-binding protein RhoC|oncogene RHO H9|rhoC GTPase|small GTP binding protein RhoC

## Disease

- [Angina Pectoris](#)
- [Breast cancer](#)
- [Breast Neoplasms](#)
- [Coronary Vasospasm](#)
- [Genetic Predisposition to Disease](#)
- [HIV Infections](#)